



Offsite Solutions

—
INNOVATIVE PRODUCT
SOLUTIONS



A FAMILY OF BRANDS UNDER ONE ROOF

Tremco CPG manufactures high performance construction materials in order to solve the complex challenges faced by today's construction industry. With over 1,400 employees across Europe, we are committed to shaping a world where buildings and structures save energy, last longer and exceed sustainability benchmarks.

Over recent years, Tremco CPG has recognised and responded to the construction sector's demands for more efficient construction techniques and processes.

Offsite and Modern Methods of Construction are key ways in which this demand can be met.

Working closely with our customers, we develop an understanding of their challenges and needs to offer a focused, innovative and tailor-made solution.

Our detailed understanding of our customers, their markets and the demands of the industries in which they operate, enables us to offer bespoke product and service packages for the complete building envelope.

With over 85 years experience within construction products, Tremco CPG has created innovative and reliable solutions that meet the most stringent challenges of rapidly advancing offsite manufacturing processes.

Europe's leading construction products brands...



- | | | |
|------------------------------|--|-----------------------------------|
| 1 Window Installation | 6 Car Parking Structures | 11 Balconies, Podia & Terraces |
| 2 Façade Construction | 7 Exterior Insulation & Finishing Systems (EIFS) | 12 Roofing |
| 3 Interior Sealing & Bonding | 8 Insulated Concrete Forms | 13 Structural & Inplant Glazing |
| 4 Seamless Resin Flooring | 9 Fire Stopping | 14 Potable & Waste Water Industry |
| 5 Subfloor Preparation | 10 Intumescent Coatings | 15 Basements & Foundations |

INNOVATIVE, FOCUSED ONE SOURCE SOLUTIONS

FOR OFFSITE MANUFACTURING

The broad spectrum of products available through our key brands - TREMCO, illbruck, Nullifire, Nudura, Dryvit & Flowcrete - offers product solutions from one manufacturing source for almost all applications.

This means the simplicity of short supply routes for our customers, products that work together from one accountable manufacturer and construction solutions that, simply, work better and harder for you.

From day one of a project when the blueprints are still a sketch on a piece of paper, to the specification stage through to the ongoing aftercare of a completed building, it's important you have a partner that's by your side every step of the way.

Our variety of solutions can help you lessen your workload, reduce your building's carbon footprint, and meet all health and safety regulations while still maintaining an aesthetic to match your building's design.

FLOORS

PAGE 10

INTERNAL WALLS

PAGE 12

FIRE SAFE ZONE

PAGE 14

EXTERNAL WALLS

PAGE 16

FIRE RATED MEMBRANES

PAGE 18

MODULE JOINTS

PAGE 20

BATHROOM PODS & FIT OUT

PAGE 22

PARK & LEISURE

PAGE 24

PANELISED SYSTEMS

PAGE 25

WHY USE TREMCO CPG ?



Reliability

Reliability through strong product brands and efficient systems.



Sustainability

Reducing the environmental footprint and providing products that help decrease buildings' energy consumption.



Single Touch Point

Single touch point for our brands covering all six sides of the building.



Technical Support

Technical and sales advice for every situation across Europe.



Training & Support

Pioneering training courses, seminars and advice for successful applications.



Local Manufacturing & Supply

23 European supply locations for quick access to products.

OFFSITE SOLUTIONS

SOLUTIONS DRIVEN FOR YOU

In an increasingly complex sector, strong price competition, sustainability and safety requirements make the appetite for more efficient and productive methods of construction ever greater.

Offsite manufacturing can deliver substantial design, manufacturing, scheduling and safety benefits across the construction sector. Its unparalleled advantages have led to the significant increase of building elements and modules constructed offsite in the UK over the last few years.

The offsite manufacturing sector uses technology and construction methods that are well established and that have been proven throughout Europe to increase productivity, maximise safety and deliver more efficient and sustainable buildings.

SCAN THE QR CODE TO EXPLORE OUR SOLUTIONS



COLLABORATIVE PARTNERSHIPS

Tremco CPG has the technical expertise, the dedicated service levels and the product range to provide bespoke solutions for sealing, bonding, air and weather tightness, fire resistance and acoustic performance for a wide range of offsite constructed modules, pods and other offsite building elements.

Product Range

Our product range is unique, in terms of its performance levels, its range of application and its extent.

Equally unique is the inter-compatibility of our range: this extends from adhesive to tape, to membrane, to fire resistant foam.

Our products, designed, manufactured and tested to work together, eliminate compatibility issues on site and further streamline off and onsite construction processes.

Bulk Products

At Tremco CPG we promote the use of higher volume packs. 600ml or higher packaging formats allow considerable economies in cost, increase speed of application and reduce both product and packaging waste.

Trade Associations

We are members of Structural Timber Association and Modular & Portable Building Association.



SERVICES

COLLABORATING FOR EFFICIENCY

We work closely with our clients from all aspects of the construction sector to understand their manufacturing processes and performance requirements.

The insight gathered from our experience is combined with our extensive product range to create multi-product solutions that are precisely calibrated to meet your unique needs.

Working With You

Our service is founded on the keystone of collaboration.

To this end, we offer free, on site assessments. These include our assimilation and understanding of your performance objectives, observation of your manufacturing processes and analysis of the products you use. The outcome for you, is manufacturing process enhancements and radical product rationalisations. Along side this, we can offer sustainability and environmental benefits through the reduction of solvent and isocyanate usage, and bulk supply options reducing waste disposal.

Additionally, as our fully integrated product solutions come from one source and achieve better performance levels with fewer products, we can offer considerable logistic and supply chain improvements.

Research and Development

With 6 technology innovation hubs across Europe, we seek to combine market insights with production know-how and research expertise to produce products and systems that make the lives of our customers easier. We have a track record for delivering innovations which simplify installation processes, are quicker to use and offer enhanced performance levels.

We value local user involvement in our development activities and seek to capture customer insights through workshops and end user testing in the field.

Quality Guaranteed

All our production plants are certified:

- ISO 9001: Internal organisation & efficiency
- ISO 14001: Environmental impact reduction
- BS OHSAS 18001: work and health safety

Our products are tested to the relevant European and British standards and where appropriate carry CE marking.



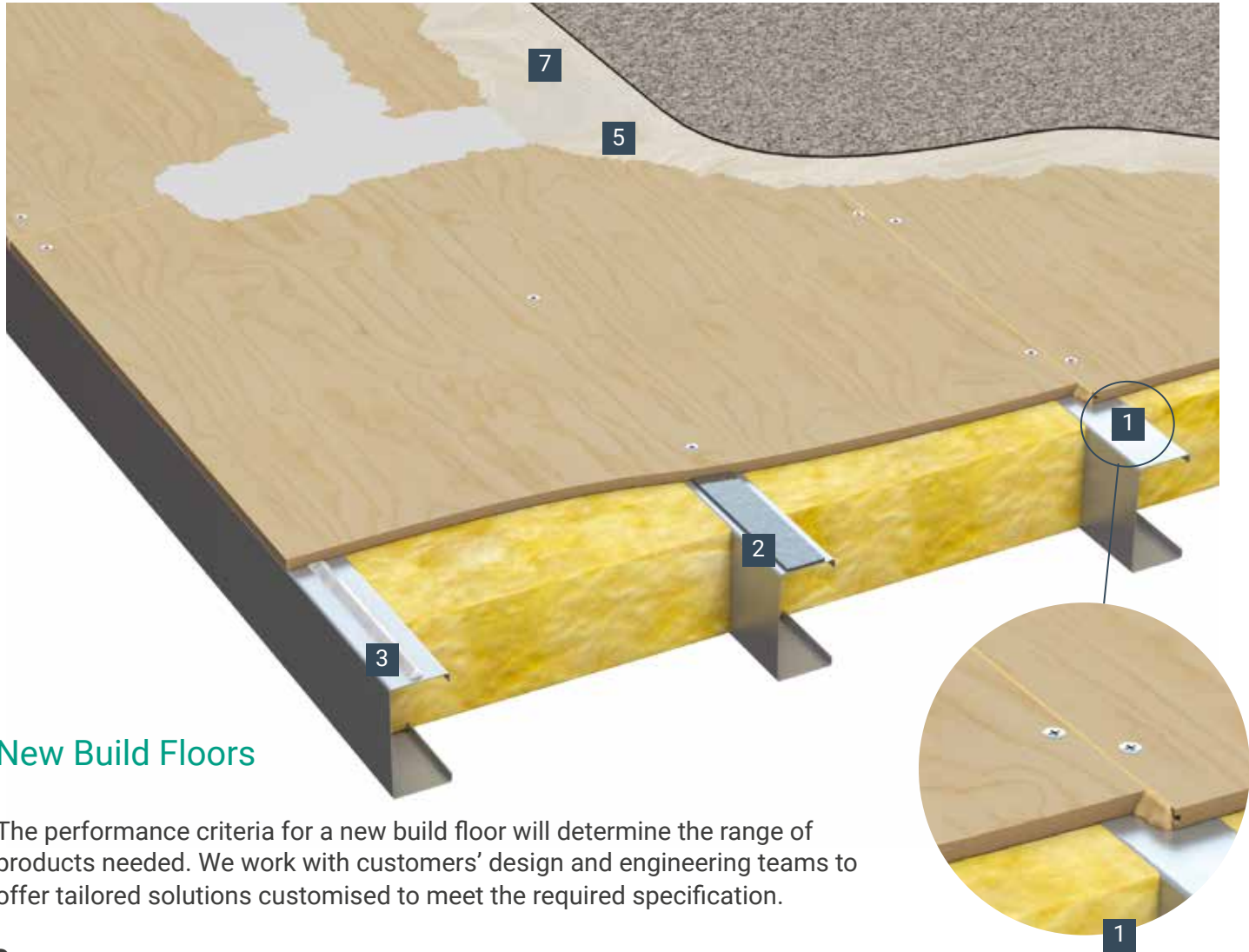
FLOORS

—

Tremco CPG offers a range of internal floor solutions to suit a variety of build up options. This includes adhesives for board joint details - whether combined with traditional mechanical fix or totally bonded options - along with acoustic tapes, smoothing compound and floor adhesives.

These intergrated and flexible product systems offer faster build times through reduction or removal of mechanical fix, enhanced acoustic and thermal properties, and perfectly smooth, permanently bonded floors.

- No floor movement or floor noise
- Cushioning underfoot
- Reduction or elimination of mechanical fix
- Perfectly smooth uninterrupted floor finish

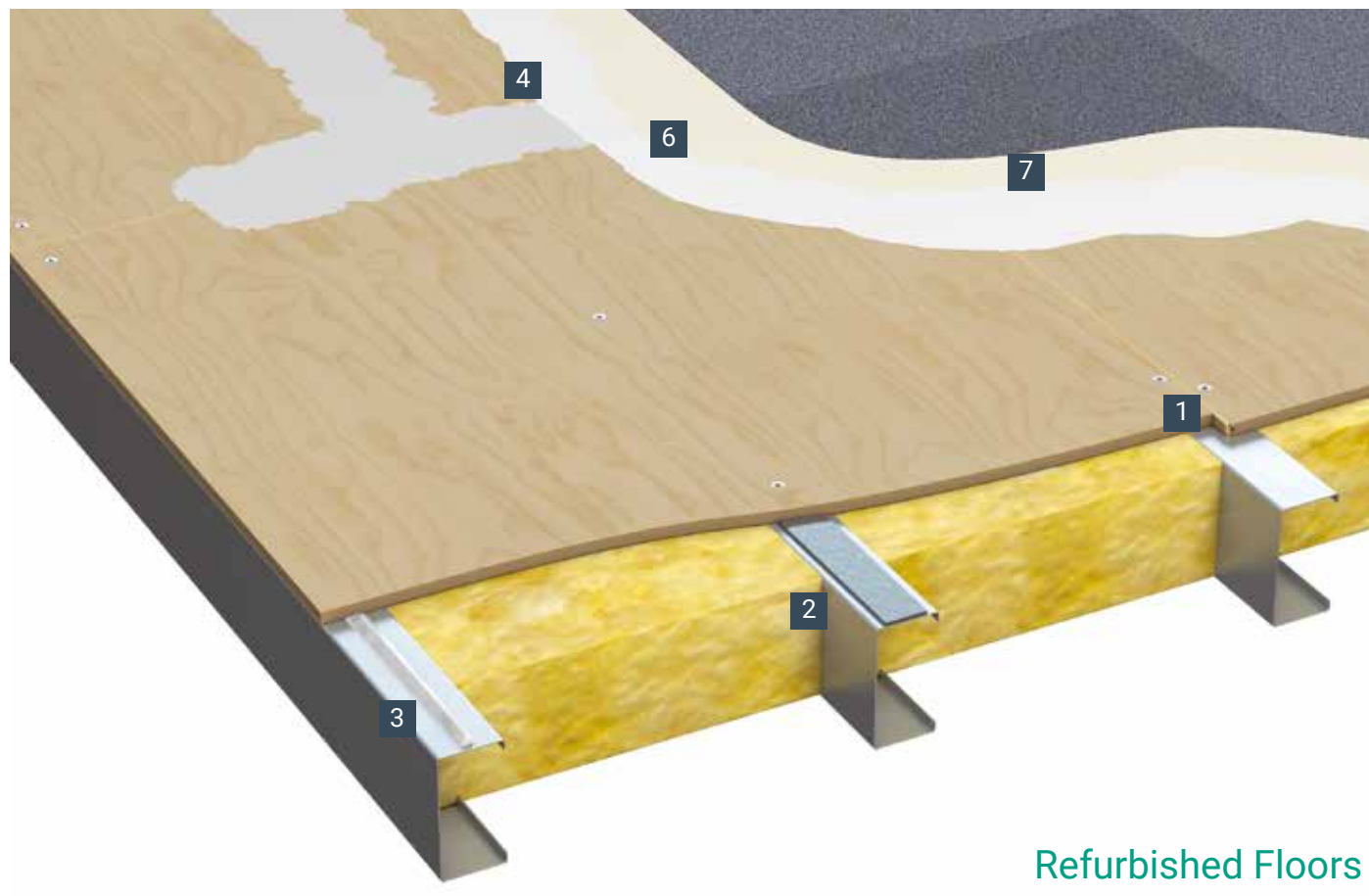


New Build Floors

The performance criteria for a new build floor will determine the range of products needed. We work with customers' design and engineering teams to offer tailored solutions customised to meet the required specification.

SCAN THE QR CODE FOR MORE PRODUCT INFORMATION

<div>1</div>  <div>PU700</div>	<div>2</div>  <div>TN119</div>	<div>3</div>  <div>SP150</div>
<div>4</div>  <div>SX302</div>	<div>5</div>  <div>SF105</div>	<div>6</div>  <div>SF110</div>
<div>7</div>  <div>SF108</div>		



Refurbished Floors

The re-use of existing timber floor panels in refurbishment projects can be facilitated by the use of TREMCO smoothing compounds. These are complemented by a range of adhesives that are recommended by key floor covering manufacturers.



Window to wall interface detail

The illustrations below highlight commonly used Tremco CPG products, but are by no means exhaustive. Many other products are available to meet differing application and performance criteria.

INTERNAL WALLS

Our bonding, sealing and fire stopping products are used extensively in internal wall construction, offering structural benefits, acoustic and thermal breaks, and module and junction detail sealing options.

Our comprehensive range and focused innovation allows various product options to suit individual application needs, ensuring the most robust, and fabrication-friendly options are selected.

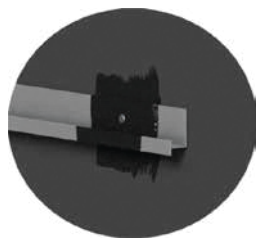
Vapour tight walls are created using our high performance, lightweight and cost effective vapour barrier, sealed along its edges with adhesive and tapes.

The range is complemented by a full suite of adhesives and primers to effectively seal the vapour barrier to the structure.

Additionally, our window membranes ensure the micro areas around the window are properly sealed.

Finally, penetrations can be sealed using our unique brushable illbruck SP925 sealant.

- Airtightness
- Controlled vapour permeability
- Elimination of cold bridging
- Sealing and bonding
- Fire stopping and acoustics



Complex small joints and penetrations from brackets and fixings can be sealed using our unique, brushable sealant - illbruck SP925 - to provide a complete airtight and moisture management solution.

1 ME317	2 ME508	3 SP525	4 FS702
5 TN119	6 SP925	7 FJ203	8 FZ400
9 MT480	10 WD120	11 FZ100	12 FP170, FP220/302
13 FS709 & FS719	14 ME003	15 FS703	16 ME006, ME060 & ME481

INTRODUCTION TO FZ100 FIRE SAFE ZONE

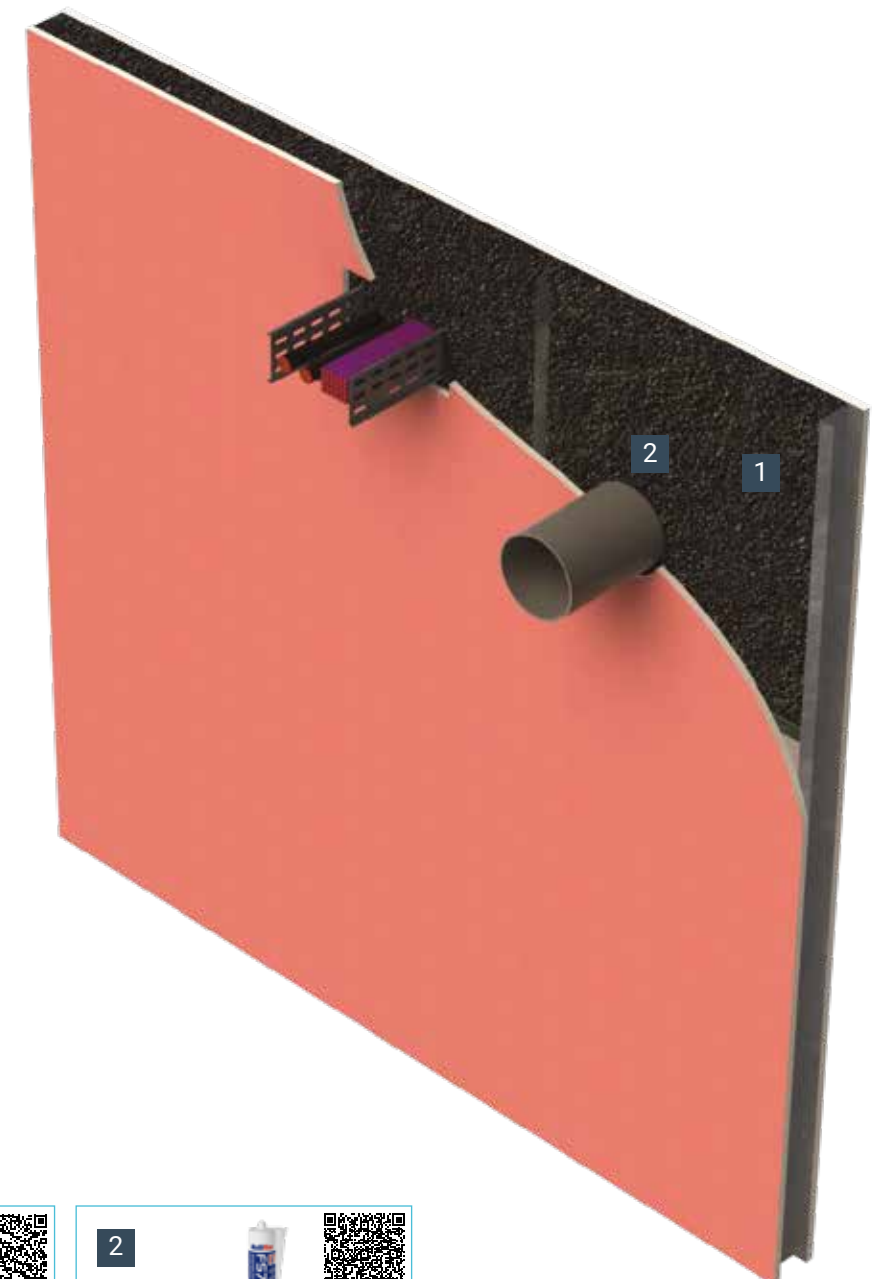
FZ100 Fire Safe Zone is a revolutionary fire protection system, and a single product solution tested to cover many fire stopping requirements.

Nullifire has developed a ground-breaking and unique fire stopping technology: GXT (Graphite, eXpansion Technology). Incorporated within FZ100 Fire Safe Zone, GXT technology, removes the need for multiple fire protection products within a single partition.

FZ100 is typically installed during the construction phase. One side of the partition may be fully installed prior to the application of FZ100. This technology should be compressed between two vertical studs at the expected service locations, the partition should be closed with the required plasterboard and the area should be identified with the "Fire Safe Zone" tape.

Product Benefits Summary:

- Allows both instant & future protection
- Quick and easy to install: clean, dry, easy to cut, lightweight
- Simple service installation
- Very low odour, low tack
- Service movement capable by design
- Does not detract from the acoustic capabilities of the partition
- Fully breathable, does not absorb moisture
- Tested to BS EN 1366-3, up to EI120



See application instructions for more information on FZ100

Why Use FZ100 Safe Zone?

- Simple to Install
- 5 Times Faster
- A Multi-Compliant Solution
- Eliminate Waste Expenditure

Key Benefits Summary:

- No need to frame and line
- No need to cut and prepare batts
- No need for multiple closure devices
- No need for repetition of work

SCAN THE QR CODE FOR
MORE INFORMATION



EXTERNAL WALLS

Windows and Sheathing

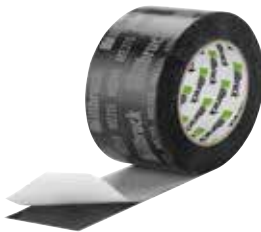
The main image, right, shows how each building element is sealed to create an airtight and vapour-open construction. This is achieved with the illbruck Building Protection Range of fully compatible adhesives, tapes and membranes.

Our high performance breather membrane are fully airtight yet vapour-open, unlike many on the market. This allows flexibility and peace of mind with the window membrane interface.

- Full weather proofing
- Airtightness
- Controlled vapour permeability
- Elimination of cold bridging
- Fire rated

ME315 in Detail

- Provides instant, temporary waterproofing
- Can be used in damp conditions
- Offers 12 months UV stability
- Available in a range of sizes



Cladding and Trims

illbruck impregnated and laminated tapes offer excellent solutions for creating flexible yet long lasting external weather seals.

The composition of these products allows them to conform to panel contours and provides an effective seal to substrates that will be subject to movement during transportation, or through general expansion and contraction once installed.

Our hybrid polymer adhesive technologies also provide combined bonding and sealing options for external trims, offering enhanced aesthetics.

- Flexible, long-lasting weather seals
- Seals adapt to contoured and profiled panels
- Seals accomodate movement, expansion and contraction.

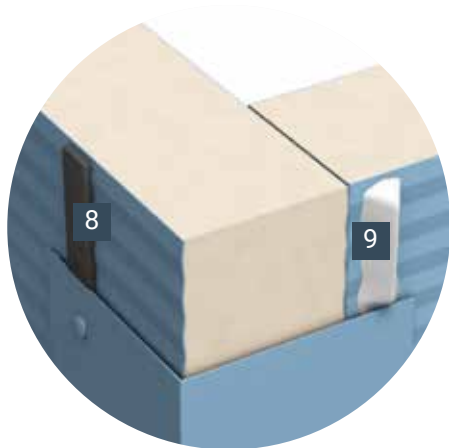


The illustrations above highlight commonly used Tremco CPG products, but are by no means exhaustive. Many other products are available to meet differing application and performance criteria.

<p>1</p> <p>AT140/150</p>	<p>2</p> <p>ME315/316</p>	<p>3</p> <p>ME220 & ME501vv</p>	<p>3</p> <p>ME007</p>
<p>4</p> <p>SP925</p>	<p>5</p> <p>ME009</p>	<p>6</p> <p>TP600</p>	<p>7</p> <p>FA600</p>
<p>8</p> <p>TN553</p>	<p>9</p> <p>SP150</p>	<p>10</p> <p>FV125</p>	<p>11</p> <p>ME050, ME055 & ME 355/356</p>



Projecting Window



Options for fixing and sealing of trims



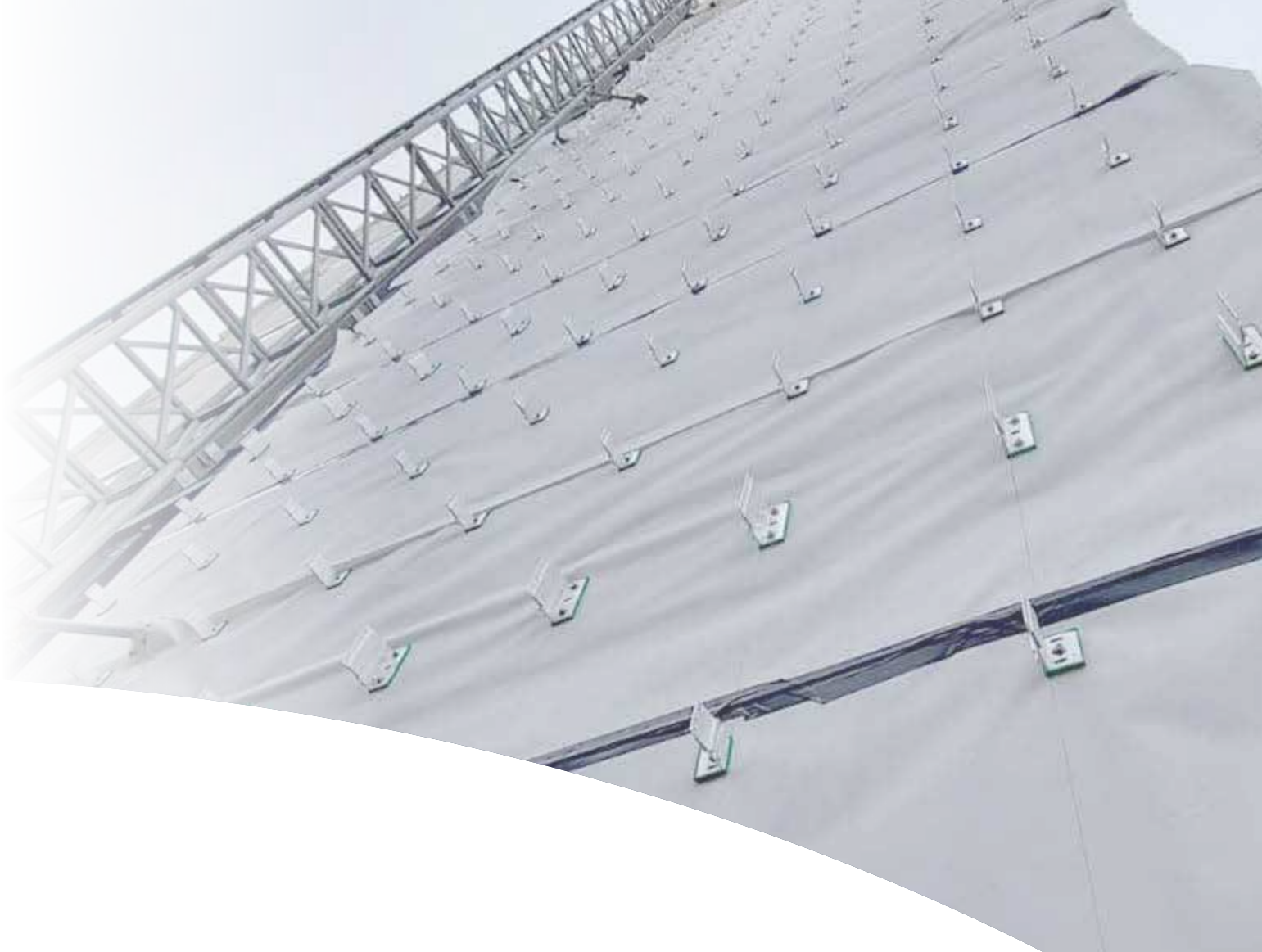
illbruck TP600 adapts to panel profile to provide complete UV and weather seal







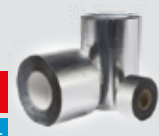

INTRODUCTION TO FIRE RATED MEMBRANE RANGE

Regulatory updates to Approved Document B (for England and Wales) are now in force, meaning that any membranes applied to the external walls should achieve a minimum fire classification of B-s3, d0 in accordance with EN 13501-1 for relevant, complex, or high-risk buildings across England & Wales.

Whilst it is important to remember that membranes are not designed to be fire-stopping material or fire breaks and as such are also not currently required to achieve a Class A1 or A2,s1, d0 rating – any membrane installed should meet the requirements of the relevant national Building Regulations.

Our range of fire-rated (FR) breathable membranes and vapour control layers allow designers to optimise the weather protection and level of air tightness confidently using a range of solutions from illbruck, to meeting even the most demanding applications where fire safety is critical.



WINDOW SEALING MEMBRANES		FAÇADE BREATHER MEMBRANE		AVCL AIR & VAPOUR CONTROL LAYER		MEMBRANE ACCESSORIES	
FR WINDOW & DOOR SEALING MEMBRANE + (ME007)	 BBA B-s2,d0 EN 1928	FR BREATHER MEMBRANE ALU (ME050)	 A2-s1, d0 W1	FR AVCL (ME060)	 A2-s1, d0	FR MEMBRANE ADHESIVE TAPE (ME355)	 A2-s1, d0* <small>*When used as part of a system</small>
		FR BREATHER MEMBRANE WHITE (ME055)	 A1 W2			FR MEMBRANE ADHESIVE (SP025)	 B-s1,d0
FR WINDOW SEALING BUTYL MEMBARNE (ME481)	 B-s1,d0 W1+					FR SEALING TAPE (ME356)	 A1

SCAN THE QR CODE FOR MORE INFORMATION

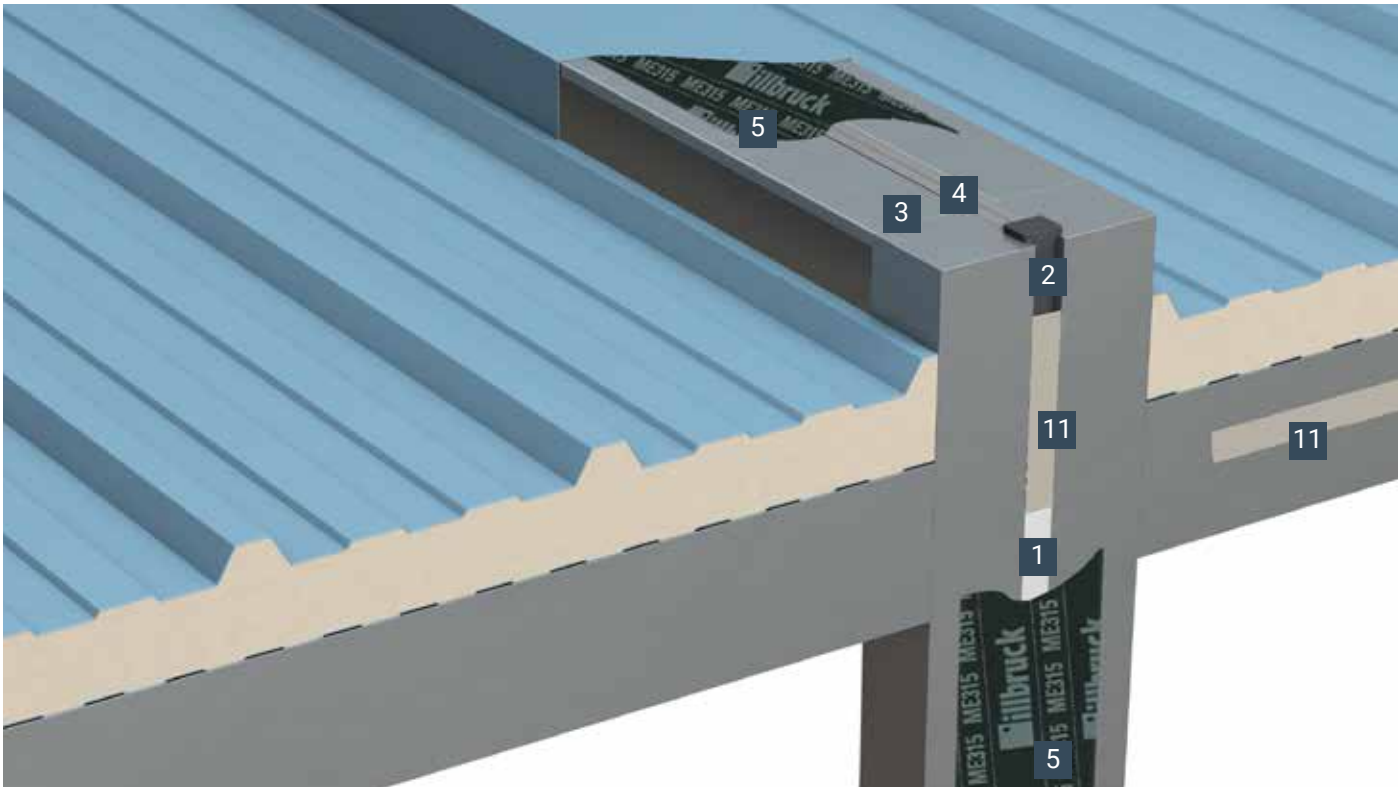


MODULE JOINTS

The sealing and weatherproofing, as well as the fire protection of module joints is critical, and can be costly should failures occur. Tremco CPG’s portfolio of tapes, sealants and waterproofing technologies offer many options to create robust junction details, along with acoustic and fire performance options.

Solutions can be designed and tested at our in-house facilities to meet specific project and/or manufacturing process requirements.

- Increased offsite manufacturing scope
- Excellent accomodation of movement
- UV stability
- Elimination of cold bridging



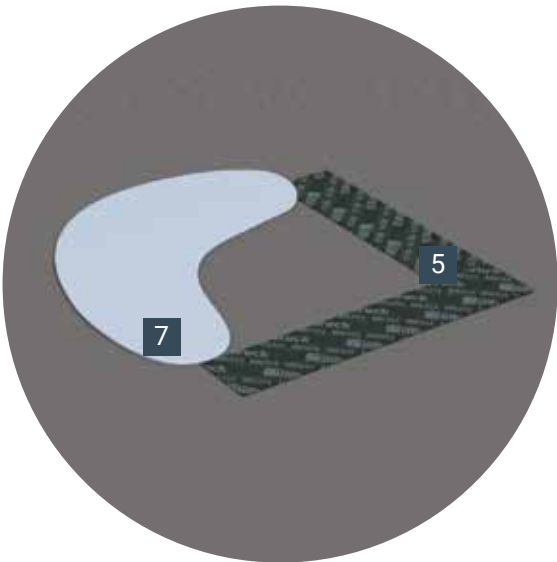
Module Joint:
Where tolerances are controllable, or minimal on site sealing is desirable, our laminated and/or encapsulated, impregnated tape systems can be pre-applied at factory build stage for compression or expansion during site installation.

Our sealant technologies offer excellent movement accommodation and UV stability for final sealing when required.

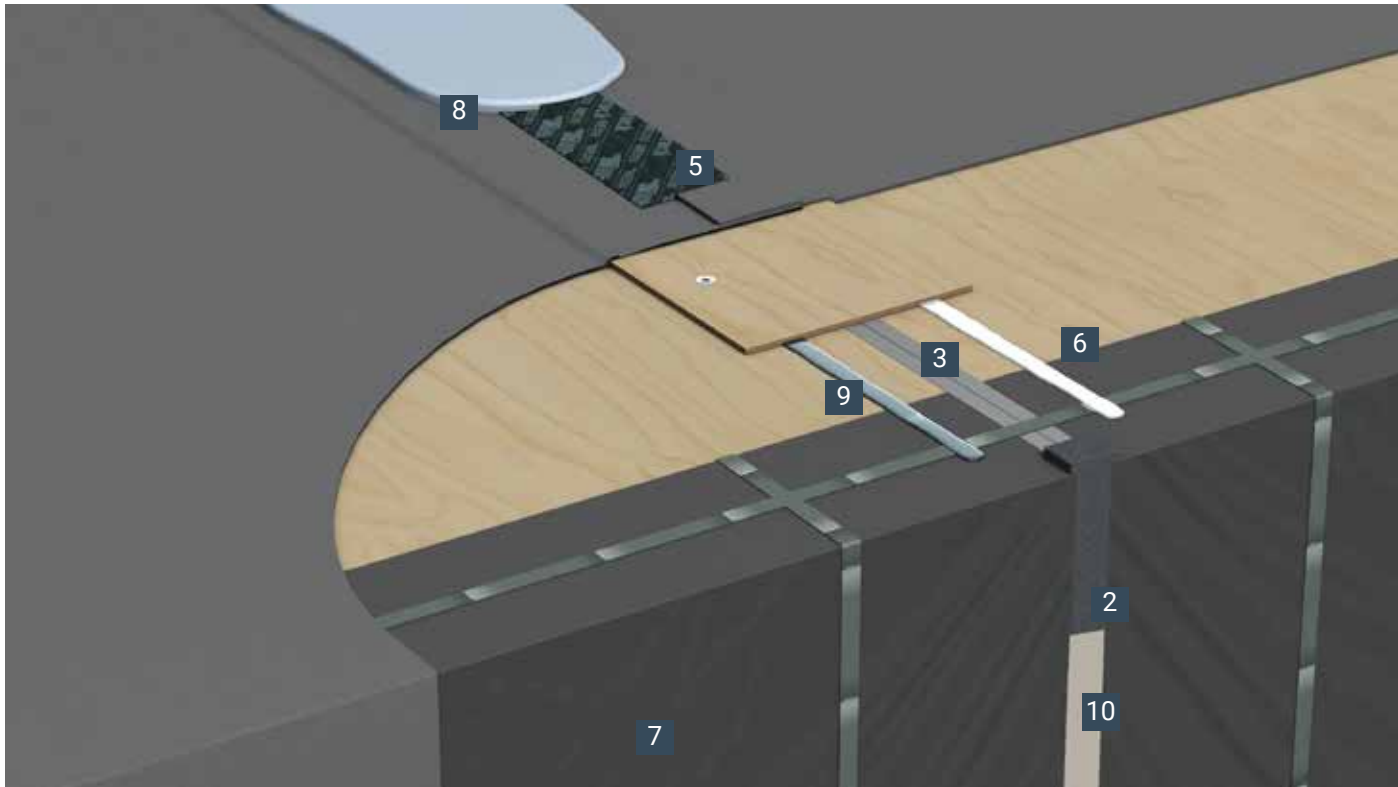
<div>1</div>  <div>FA600</div>	<div>2</div>  <div>TP600</div>	<div>2</div>  <div>TP601</div>
<div>3</div>  <div>TN553</div>	<div>4</div>  <div>FZ400</div>	<div>5</div>  <div>ME315</div>

Module Joint: Temporary Waterproofing

Although project requirements vary greatly in terms of site conditions and application restrictions, using our cold applied liquid waterproofing systems in conjunction with our sealants and tape technologies, offers wide-ranging options for temporary and permanent waterproofing solutions.



illbruck ME315 tape or cold applied liquid waterproofing can be used to fix tears in roof blankets



<div>6</div>  <div>SP525</div>	<div>7</div>  <div>ME009</div>	<div>8</div>  <div>Alphaguard Puma</div>
<div>9</div>  <div>OS111</div>	<div>10</div>  <div>FJ203</div>	<div>11</div>  <div>FS703</div>

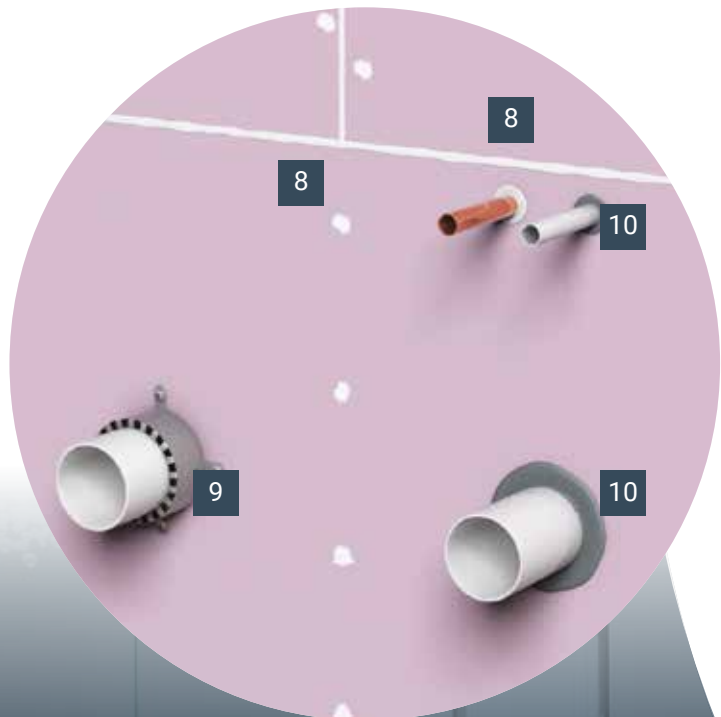
The illustrations above highlight commonly used Tremco CPG products, but are by no means exhaustive. Many other products are available to meet differing application and performance criteria.

BATHROOM PODS AND FIT OUT

Bathroom and kitchen pods require wide-ranging product solutions incorporating fire stopping, bonding and final sanitary sealing.

The Tremco CPG range can offer cross-compatible products for all applications from one manufacturer, which accelerates offsite manufacturer and maximises production output.

- Up to 4 hours fire stopping
- Mirror bonding and sanitarywear sealing
- Good acoustic insulation, reduction of sound transfer
- Bonding of boards to framework



Waste and soil pipe detail options

Steel Frame

Our hybrid polymer adhesives and sealants maintain bonds and seals during transportation and installation by accommodating movements and can reduce sound transfer in installed pods. Bonding of mirrors and trims can also improve aesthetics by removal of mechanical fixings.

Our Nullifire range provides a broad spectrum of fire stopping solutions including time and space saving options.

GRP Skin

Hybrid polymer adhesives offer high-grab bonding solutions across many fit-out applications, including mirror bonding and fixing of external timber support panels.

Our premium quality silicone ranges are suitable for use in bathroom and kitchen pod applications where a quality performance and aesthetic seal is required.



The illustrations above highlight commonly used Tremco CPG products, but are by no means exhaustive. Many other products are available to meet differing application and performance criteria.

<div>1</div> <div>MT480</div> <div></div> <div></div>	<div>2</div> <div>SP525</div> <div></div> <div></div>	<div>3</div> <div>SP510</div> <div></div> <div></div>	<div>4</div> <div>SP150 & SP050</div> <div></div> <div></div>
<div>5</div> <div>FA600 & GS123</div> <div></div> <div></div>	<div>6</div> <div>FZ100</div> <div></div> <div></div>	<div>7</div> <div>CY340</div> <div></div> <div></div>	<div>8</div> <div>FS702</div> <div></div> <div></div>
<div>9</div> <div>FP170 & FP220</div> <div></div> <div></div>	<div>10</div> <div>FS709 & FS719</div> <div></div> <div></div>		

PARK AND LEISURE

As build standards approach building regulation levels, Tremco CPG has the solutions to assist with air and weather tightness requirements for the park and leisure sector. Working closely with our customers, we develop optimised solutions that precisely suit their needs.

Weather sealing is critical in timber frame construction and our impregnated tapes offer excellent solutions for the profiled cladding systems commonly used.

Our high quality products offer opportunities for increased production throughput, along with high-end finishes in bathroom and kitchen applications.

- Improved production speeds - fast cure adhesive systems
- Adaptable weather sealing - impregnated tapes
- Airtight solutions - breathable and vapour membranes
- High quality fit-out products - silicone sealants, hybrid polymer adhesives and acrylic caulks



Image reproduced with kind permissions of Marley Eternit Ltd

PANELISED SYSTEMS

This sector focuses on sustainable building and low waste processes, along with precision engineering, guaranteeing consistent quality.

Where panel manufacturers are providing structural kits or closed panel frames with insulation, internal wall linings, windows, doors and external claddings, the Tremco CPG product portfolio fits perfectly. We offer products for panel junctions, reduction of thermal bridging, better airtightness and improved thermal efficiency, simultaneously minimising waste.

- Airtightness
- Controlled vapour permeability
- Elimination of cold bridging
- Sealing, Bonding and Fire Stopping



Tremco CPG Europe manufactures high performance building materials in order to solve the complex challenges faced by today's construction industry. With over 1,400 employees across Europe, we are committed to being by your side to shape a world where buildings and structures save energy, last longer and exceed sustainability benchmarks.

Delivering World-Class Construction Product Solutions.

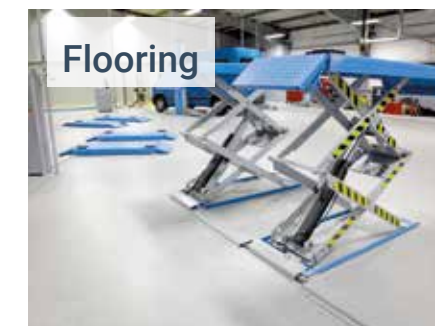
The product brands housed within Tremco CPG Europe cover a wide array of different construction needs and provide a wealth of complex services, support and systems that are rarely found together under one roof.



Window Insulation, Façade Construction, Exterior Insulation & EIFS, Structural & Inplant Glazing, Insulated Concrete Forms (ICFs)



Intumescent Coatings, Fire Stopping



Seamless Resin Flooring, Subfloor Preparation, Car Parking Structures



Potable & Waste Water Industry, Balconies, Terraces, Basements & Foundations



Liquid Applied Systems, Felt Systems, Vegetated Roofing

Europe's leading construction products brands...

trusted brands
COLLABORATING FOR SUCCESS

Tremco CPG UK Ltd
Coupland Road, Hindley Green
Wigan WN2 4HT UK

www.tremcocpg.eu
+44 (0) 1942 251400
hello@tremcocpg.com

Sept 25 V1