

ROBOT FLOORING GUIDE

Providing an exceptional flooring solution that allows packaging and distribution centres to benefit from increased productivity through mezzanine construction and the use of wheeled robots.

ROBOT FLOORING

Robot flooring is a unique and innovative product designed to be effortlessly installed on timber mezzanine decking and concrete substrates. This results in a smooth, abrasion-resistant, and anti-static floor surface.

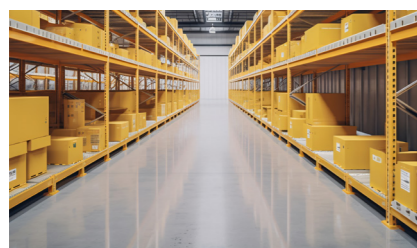
Combining exceptional resistance to abrasion with remarkably high flexibility, our robot flooring solution enables packaging and distribution centers to incorporate mezzanine flooring. With each new level, productivity can double or even triple.

Flowshield RF, a PU-based resin floor coating has been specially designed by Flowcrete for robot floors. This finish is not only durable enough to endure constant traffic from robots 24/7 but also flexible enough to be seamlessly applied to mezzanine decking.

The seamless, impervious nature of resin floors makes them easy to clean, which means that they are not only well-suited for a variety of environments but are also able to withstand extreme abrasion resistance.

This flooring system has been specifically engineered and designed to meet the rigorous demands of warehouse and distribution environments. It ensures optimal performance in industrial settings.

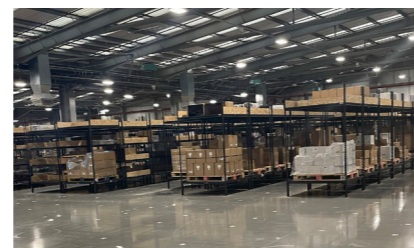
Application Suitability



Warehouse Environments



Distribution Centres



Packaging Centres



Fullfillment Centres



Logistics Hubs



Storage Facilities



THE PARTNERSHIP

Flowcrete, Davicon, Avanta and ATS have introduced a strategic partnership designed to transform your warehouse or distribution centre. Here, collaboration takes centre stage and innovation meets expertise.

Flowcrete is your resin flooring provider, delivering modern floor finishes in a variety of colours, for commercial, public and residential facilities.

Davicon is your leading manufacturer of mezzanine floors and unlike other suppliers, Davicon design and manufacture all of their floors in-house.

Avanta is your full turnkey fit-out partner, who create the environment for robotics, including mezzanine floors, resin surfaces, mesh caging, shelving and more.

ATS is your resin install partner, crafting seamless floors for UK businesses and commercial property owners.

Standard colour chart



The applied colours may differ from the examples shown. For a full colour chart and samples, contact your local Tremco CPG UK

Technical Information

REACTION TO FIRE	
EN 13501-1	B _n -s ¹
SLIP RESISTANCE	
EN 13036-4 / BS 7976-2	Dry >40 low slip potential
IMPACT RESISTANCE	
EN ISO6272-1	11 Nm
WEAR RESISTANCE	
EN 13892-5	Abrasion quantity 2.25 cm ³
ELONGATION AT BREAK	
BS 63019	30%
TEMPERATURE RESISTANCE	
Tolerant of sustained temperatures up to 60°C	
FLEXURAL STRENGTH	
EN 13892-2	>20 N/mm ²

Flowshield RF (2 - 3 mm)

A heavy duty, self-smoothing, solvent free, flexible, coloured, polyurethane based floor coating for robot floors.

Ideal for industrial environments with intensive traffic such as warehouses and distribution centres.

-  Seamless
-  Chemical Resistant
-  Easy to Clean
-  Solvent Free



Tremco CPG Europe manufactures high performance building materials in order to solve the complex challenges faced by today's construction industry. With over 1,400 employees across Europe, we are committed to being by your side to shape a world where buildings and structures save energy, last longer and exceed sustainability benchmarks.

Delivering World-Class Construction Product Solutions.

The product brands housed within Tremco CPG Europe cover a wide array of different construction needs and provide a wealth of complex services, support and systems that are rarely found together under one roof.



Window Insulation, Façade Construction, Exterior Insulation & EIFS, Structural & Inplant Glazing, Insulated Concrete Forms (ICFs)



Intumescent Coatings, Fire Stopping



Seamless Resin Flooring, Subfloor Preparation, Car Parking Structures



Potable & Waste Water Industry, Balconies, Terraces, Basements & Foundations



Liquid Applied Systems, Felt Systems, Vegetated Roofing

Europe's leading construction products brands...



Tremco CPG UK Ltd
Coupland Road, Hindley Green
Wigan
WN2 4HT UK

+44 (0) 1942 251400
hello@tremcocpg.com
www.tremcocpg.eu



www.flowcrete.eu



[@flowcrete](https://twitter.com/flowcrete)



hello@tremcocpg.com



allthingsflooring.com



youtube.com/flowcretetv



[/company/flowcrete](https://in.linkedin.com/company/flowcrete)