

## EXTERNAL WALL INSULATION (EWI) SYSTEMS

*a cost-effective build solution*







## THE DRYVIT DIFFERENCE

### The Trusted, Cost-Effective Choice

The trusted choice for architects, building owners and contractors who want a high performance, insulated cladding solutions. Our systems have been installed in over 500,000 commercial and residential buildings across the world. With the use of efficient modern materials and installation methods, Dryvit systems have continually proven to be a cost-effective build solution. Whether installed in-situ, or prefabricated off-site, our systems can reduce construction time.

### Energy Efficiency

Dryvit EWI systems reduce from 30% up to 70% of the energy required (for heating and cooling) to maintain and optimise the temperature inside the building.

### Resistance to Weather Conditions

Dryvit systems are extremely durable and maintain their performance under the influence of atmospheric conditions such as; UV radiation, heavy rainfall, high humidity, variable wind loads and fluctuating temperatures.

### A Wide Range of Aesthetic Solutions

Our materials allow designers to achieve standard aesthetic effects, e.g. pebble textured or coarse textured finish, as well as many unique decorative effects to stimulate the appearance of stone, granite, wood, brick, concrete, reflective and rusted metal panels - whilst maintaining all thermal advantages of an insulated facade system.



## **Dryvit has been designing and supplying External Wall Insulation (EWI) systems since 1969, focusing on high quality and innovative solutions.**

We consistently deliver new products and systems to the market to meet and exceed the energy efficiency and safety requirements of building regulations. In addition to the functional benefits, Dryvit systems provide architects and investors with amazing design possibilities, and creative aesthetic design options.

Dryvit is a brand of CPG Construction Products Group, a European manufacturer and service provider of high-quality building materials. Leaders in the field of EWI our products will help you achieve the results you are looking for.

### **Safe and Durable System**

Due to the design of a Dryvit system and the use of high-quality materials, we are able to provide unsurpassed long-term durability meeting design requirements in virtually any location.

### **Technical Support**

Dryvit has built its reputation on the quality of our service as well as our outstanding products. Our team of technical experts fully understand the challenges in today's construction industry and that's why our team

are on hand to support at every stage of your project. From initial product identification through to project inspections, warranties and advice on maintenance schedules, our customers can be assured that help is on hand.

We also offer a range of training options, from on-site practical training to RIBA approved CPD's, here at Dryvit we ensure that our products are applied in the correct way to achieve lasting results.



# OUTSULATION

Outsulation is a cost effective external wall insulation (EWI) system suitable for use on new construction or refurbishment projects.

By bringing insulation to the outside of external walls, these continuous EWI systems eliminates thermal bridging, and reduces air, wind and moisture penetration through the system.

This lightweight and highly durable external insulation system is tested in accordance with BS 8414-1 and 2, and is classified to meet the performance requirements of BR135.

## System Benefits at a Glance



Designed to withstand high humidity



Resistance to weather & driving rain



Resistant to high wind load



Resistant to algal growth



Designed to withstand extreme temperature fluctuations

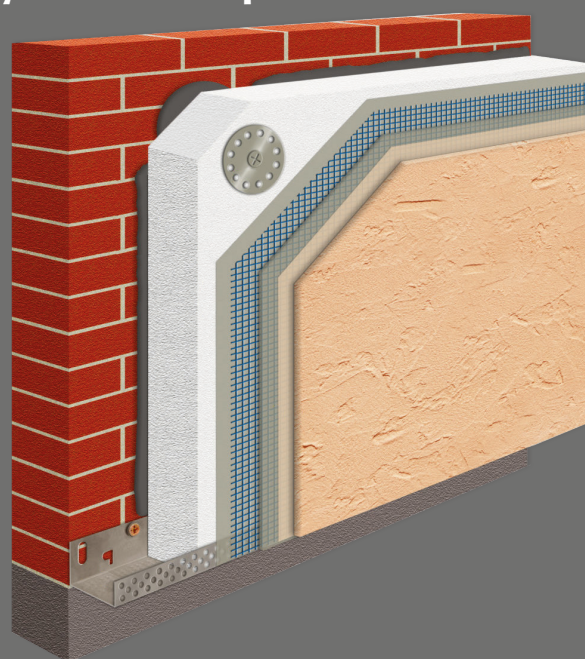


Suitable for low-rise, mid-rise and high-rise buildings



Suitable for individual houses

## System Build Up



### Adhesives and Base Coats:

Genesis DM Plus

### Insulation:

Dryvit Expanded Polystyrene (White) and Dryvit LL Expanded Polystyrene (Grey)

### Standard Mesh:

Standard Plus 150 and 200

### High Impact Mesh:

Panzer 260, 500 and 700

### Primers:

Colour Prime and Colour Prime S

### Finishes:

PMR Finishes, HDP Finishes, FD PMR Finishes, Ameristone, TerraNeo, Stone Mist, Stone Mist T, Custom Brick and Drytex Wood

### Coatings and Sealer's:

Silstar Pro, Demandit Smooth, Weatherlastic Smooth, SealClear and HDP Water Repellent Paint



# ROXSULATION PRO

Roxsulation Pro is a cost effective stone wool external wall insulation (EWI) system with excellent fire performance. The system is suitable for use on either new construction or refurbishment projects without height restrictions.

This system achieves Euro-class A2-s1, d0 in accordance with EN 13501-1. Offering good impact resistance and resistant to shrinkage and thermal cracking, our breathable system, Roxsulation Pro is designed for use in virtually any location.

## System Benefits at a Glance



Designed to withstand high humidity



Resistance to weather & driving rain



Resistant to high wind load



Resistant to algal growth



Designed to withstand extreme temperature fluctuations

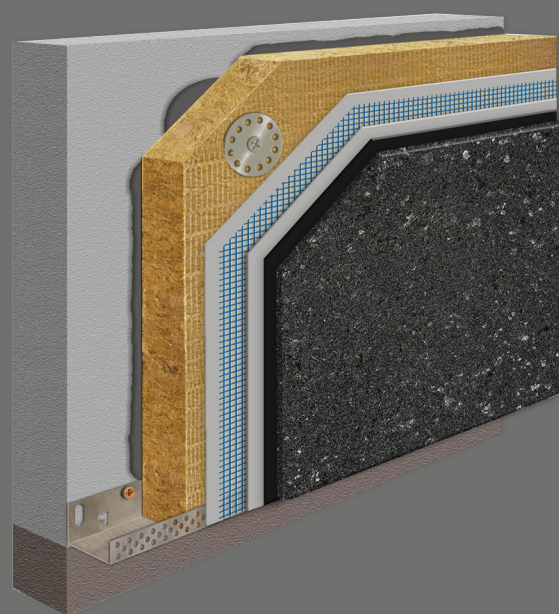


Suitable for low-rise, mid-rise and high-rise buildings



Suitable for individual houses

## System Build Up



### Adhesives:

Roxhesive, Fibercoat and Genesis DM Plus

### Insulation:

DD Stone Wool Slab, MD Stone Wool Slab and Stone Wool Lamella

### Base Coat:

Fibercoat

### Standard Mesh:

Standard Plus 150

### High Impact Mesh:

Panzer 260, 500 and 700

### Key Coats/Primers:

Demandit Smooth, Colour Prime Plus and Wood Prime

### Finishes:

HDP Finishes, Hybrid Finishes, PMR Finishes, Ameristone, TerraNeo, Stone Mist T, Stone Mist, Drytex Wood and Custom Brick

### Coatings and Sealers:

Silstar Pro



# OUTSULATION RAIL

Outsulation Rail is a moisture drainage external wall insulation (EWI) system suitable for use on either new construction or refurbishment projects. Due to the increased demands for wall systems to be able to drain away incidental moisture, Outsulation Rail has been developed to incorporate a drained cavity.

Outsulation Rail is tested in accordance with BS 8414-1 and 2 and classified as meeting the performance requirements of BR 135.

Outsulation Rail enables new or existing buildings to meet strict energy efficiency requirements. The option to incorporate high performance low lambda EPS assists in meeting the most demanding carbon management plan. Heating or cooling bills are significantly reduced.

## System Benefits at a Glance



Designed to withstand high humidity



Resistance to weather & driving rain



Resistant to high wind load



Resistant to algal growth



Designed to withstand extreme temperature fluctuations

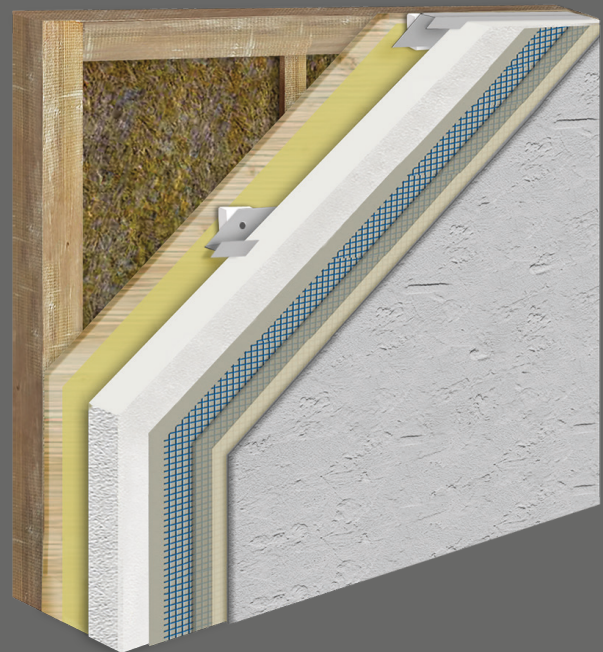


Suitable for low-rise, mid-rise and high-rise buildings



Suitable for individual houses

## System Build Up



### Base Coat:

Genesis DM Plus

### Insulation:

Dryvit Expanded Polystyrene (White) and Dryvit LL Expanded Polystyrene (Grey)

### Standard Mesh:

Standard Plus 150 and 200

### High Impact Mesh:

Panzer 260, 500 and 700

### Primers:

Colour Prime and Colour Prime S

### Finishes:

PMR Finishes, HDP Finishes, FD PMR Finishes, Ameristone, TerraNeo, Stone Mist, Stone Mist T, Custom Brick and Drytex Wood

### Coatings and Sealer's:

Silstar Pro, Demandit Smooth, SealClear



# OUTSULATION PLUS

Outsulation Plus is a moisture drainage external wall insulation (EWI) system suitable for use on either new construction or refurbishment projects. Due to the increased demands for wall systems to be able to drain away incidental moisture, Outsulation Plus has been developed to incorporate a moisture drainage plane.

Outsulation is tested in accordance with BS 8414-1 and 2 and classified as meeting the performance requirements of BR 135.

The unique moisture drainage detailing removes incidental moisture that may enter the building envelope at terminations or penetrations.

## System Benefits at a Glance



Designed to withstand high humidity



Resistance to weather & driving rain



Resistant to high wind load



Resistant to algal growth



Designed to withstand extreme temperature fluctuations

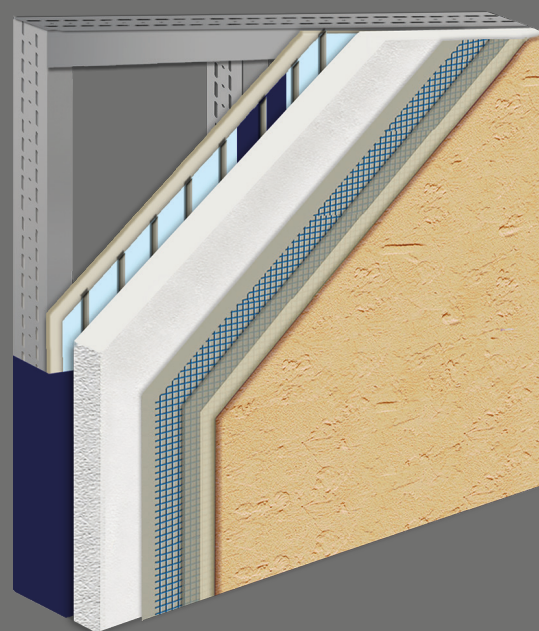


Suitable for low-rise, mid-rise and high-rise buildings



Suitable for individual houses

## System Build Up



### Adhesive and Base Coat:

Genesis DM Plus

### Insulation:

Dryvit Expanded Polystyrene (White) and Dryvit LL Expanded Polystyrene (Grey)

### Air and Moisture Barrier:

Aqua-flash and Backstop NT

### Standard Mesh:

Standard Plus 150 and 200

### High impact Mesh:

Panzer 260, 500 and 700

### Key Coats/Primers:

Colour Prime and Colour Prime S

### Finishes:

PMR Finishes, HDP Finishes, FD PMR Finishes, Ameristone, TerraNeo, Stone Mist, Stone Mist T, Custom Brick and Drytex Wood

### Coatings and Sealer's:

Silstar Pro, Demandit Smooth, Weatherlastic Smooth, SealClear, HDP Water Repellent Paint



# ICF 500 RENDER SYSTEM

ICF 500 Render System is a cost-effective render solution for projects utilising the Nudura Solid Insulated Wall System (ICF). Providing the marketplace with a fully BBA certified solution, our system allows architects, specifiers, developers and self-builders to complete a Dryvit and Nudura project with an outstanding rendered finish, with complete peace of mind. Offering a highly energy efficient and airtight construction, this system which boasts a fast method of installation, also comes with a joint warranty.

## System Benefits at a Glance



Designed to withstand high humidity



Resistance to weather & driving rain



Resistant to high wind load



Resistant to algal growth



Designed to withstand extreme temperature fluctuations

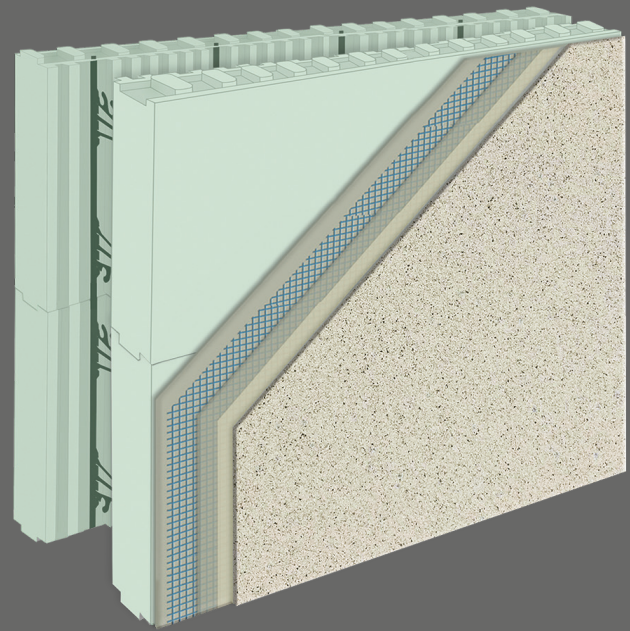


Suitable for low-rise, mid-rise and high-rise buildings



Suitable for individual houses

## System Build Up



### Basecoat:

Fibercoat

### Standard Mesh:

Standard Plus 150 and 200

### High Impact Mesh:

Paner 260, 500 and 700

### Primers:

Colour Prime Plus

### Finishes:

PMR Finishes, HDP Finishes, Hybrid Finishes, FD PMR Finishes, Ameristone, TerraNeo, Stone Mist, Stone Mist T, Custom Brick and Drytex Wood

### Coatings and Sealer's:

Silstar Pro, Demandit Smooth, Weatherlastic Smooth, SealClear, HDP Water Repellent Paint





# DRYSULATION

Drysulation is a cost-effective external wall insulation (EWI) system suitable for use on new construction or refurbishment projects.

By bringing insulation to the outside of external walls, this barrier EWI eliminates thermal bridges; reduces air, wind and moisture penetration through the system; stabilises the interior environment and minimises thermal shock.

Drysulation has been independently certified for use with either standard (white) or high performance low lambda grade (grey) expanded polystyrene (EPS) to meet the thermal needs of all wall and building types. It also has a wide range of finish options to suit architectural requirements.

## System Benefits at a Glance



Designed to withstand high humidity



Resistance to weather & driving rain



Resistant to algal growth



30 or 60 year durability option

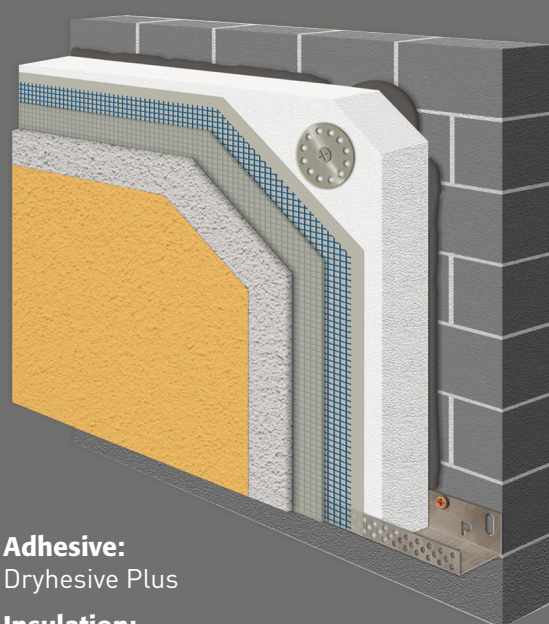


Suitable for low-rise buildings



Suitable for individual houses

## System Build Up



**Adhesive:**  
Dryhesive Plus

**Insulation:**  
Dryvit Expanded Polystyrene (White) and  
Dryvit LL Expanded Polystyrene (Grey)

**Base Coats:**  
Primus M

**Standard Mesh:**  
Standard Plus 150 and 200

**High Impact Mesh:**  
Paner 260, 500 and 700

**Primers:**  
Colour Prime and Colour Prime S

**Finishes:**  
PMR Finishes, HDP Finishes, FD PMR Finishes,  
Ameristone, TerraNeo, Stone Mist, Stone Mist T,  
Custom Brick and Drytex Wood

**Coatings and Sealer's:**  
Silstar Pro, Demandit Smooth, Weatherlastic Smooth,  
SealClear, HDP Water Repellent Paint





## CHANGING THE FACE OF ARCHITECTURE

Dryvit's range of finishes enable designers to achieve the look of granite, limestone, reconstituted stone, brickwork, wood or stone feature work. Providing a durable and lightweight equivalent to their natural alternative at a fraction of the cost. Our speciality finishes complement the standard texture range that is also available within the UK. Offering a wide choice of colours with the option to match stone or brick where required.

The speciality finishes further extend the versatility of Dryvit's external insulation and anti-crack render systems and provide architects, specifiers and building owners with a highly adaptable method of achieving striking aesthetic results.

When our speciality finishes are combined with our range of external wall insulation systems they provide a thermally efficient cladding solution that is difficult to match in terms of performance when using more traditional cladding options.

Whether the project is new build or renovation Dryvit's 'speciality' finishes offer high-performance characteristics that ensure a longlasting radiant finish certain to enhance a building's stature.



## SPECIALITY FINISHES



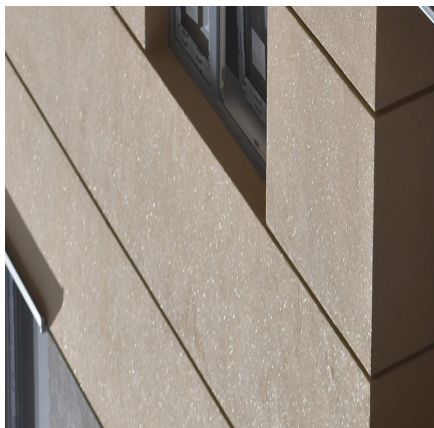
**Custom Brick**



**Concrete Slab**



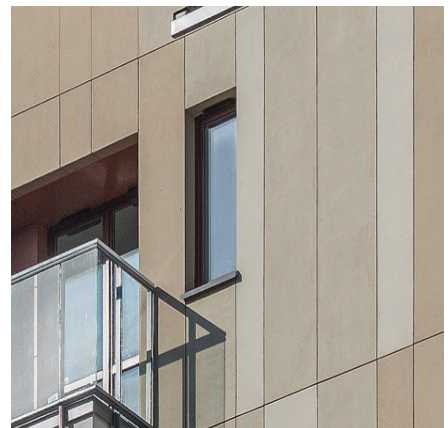
**Ameristone**



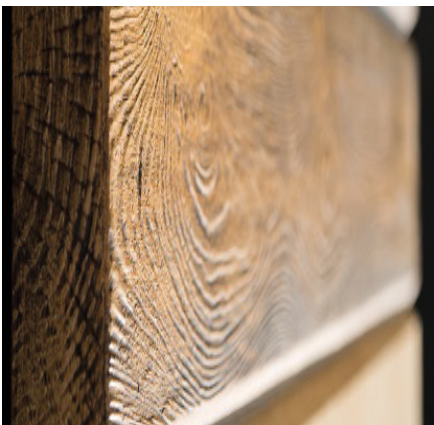
**Stone Mist T**



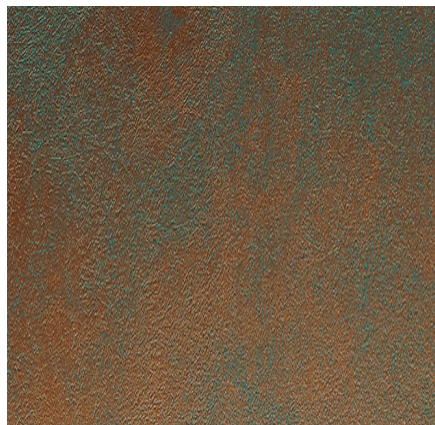
**Terraneo**



**Stone Mist**



**Wood Effect**



**Rust Effect**



**Limestone**



A photograph of a modern, two-story house with a light-colored exterior wall. The house features a balcony with a glass railing and a wooden planter box on the roof. The house is surrounded by greenery, including trees and tall grasses in the foreground. The sky is clear and blue.

## REDUCE YOUR CARBON FOOTPRINT WITH DRYVIT

It is estimated that around 35% of the overall heat lost from properties in the UK dissipates through un-insulated external walls. This worrying statistic contributes to increased rates of CO<sub>2</sub> emissions and far greater levels of domestic fuel consumption. To enable the Government to meet their commitment of reducing national greenhouse gas emissions by 80% by 2050, this problem has to be addressed.

The UK is committed to reducing its greenhouse gas emissions by at least 34% by 2020 and 80% by 2050, relative to 1990 levels. Due to approximately 14 million homes being inadequately insulated it is estimated that 25% of the UK's total carbon emissions are currently generated from domestic households. Aligned with their commitment to greatly reducing the national level of carbon emission output, the UK Government have introduced a number of key measures to ensure that they are successful in achieving their goals.

There are over 8 million homes in the UK with solid walls, adopting a EWI solution is an extremely effective way to insulate your home or property.

External Wall Insulation (EWI) is an extremely effective method of insulating properties constructed from solid walls, or those with cavities that are categorised as 'hard to treat'. EWI comprises a continuous layer of insulation that is fixed adhesively and/or mechanically to the outside of a building. The insulation is then coated with a decorative weatherproof render which can be finished in a wide array of textures and colours allowing you freedom to improve the appearance of your building to your own taste.



### **Testing & Certification**

All Dryvit systems are extensively tested to meet the strictest regulatory requirements and have been time served since 1969. In addition to Dryvit's standard product liability warranties further reassurance is provided by independent certification from test bodies such as BBA and BRE as well as other internationally renowned establishments.

### **Standard Warranties**

Dryvit UK offers a standard ten year limited materials warranty for all systems.





**Construction  
Products Group**  
Europe

CPG Europe manufactures high performance building materials in order to solve the complex challenges faced by today's construction industry. It is the home for multiple European construction product brands, including illbruck, Flowcrete, Nullifire, Tremco, Vandex, Dryvit and Nudura. With over 1,400 employees across Europe, we are committed to being by your side to shape a world where buildings and structures save energy, last longer and exceed sustainability benchmarks.

From joint sealing, bonding and insulation through to passive fire protection, flooring, waterproofing and roofing solutions- the product brands housed within CPG Europe cover a wide array of different construction needs. Combined with the wealth of expertise, services and support we provide a truly unique offer - to make our customers more successful time after time.

CPG Europe is part of RPM International Inc. - one of the world's leading construction products companies for both the industrial and consumer segments.

Europe's leading construction products brands...



## Our Values



COLLABORATION



HONESTY &  
INTEGRITY



RESPECT

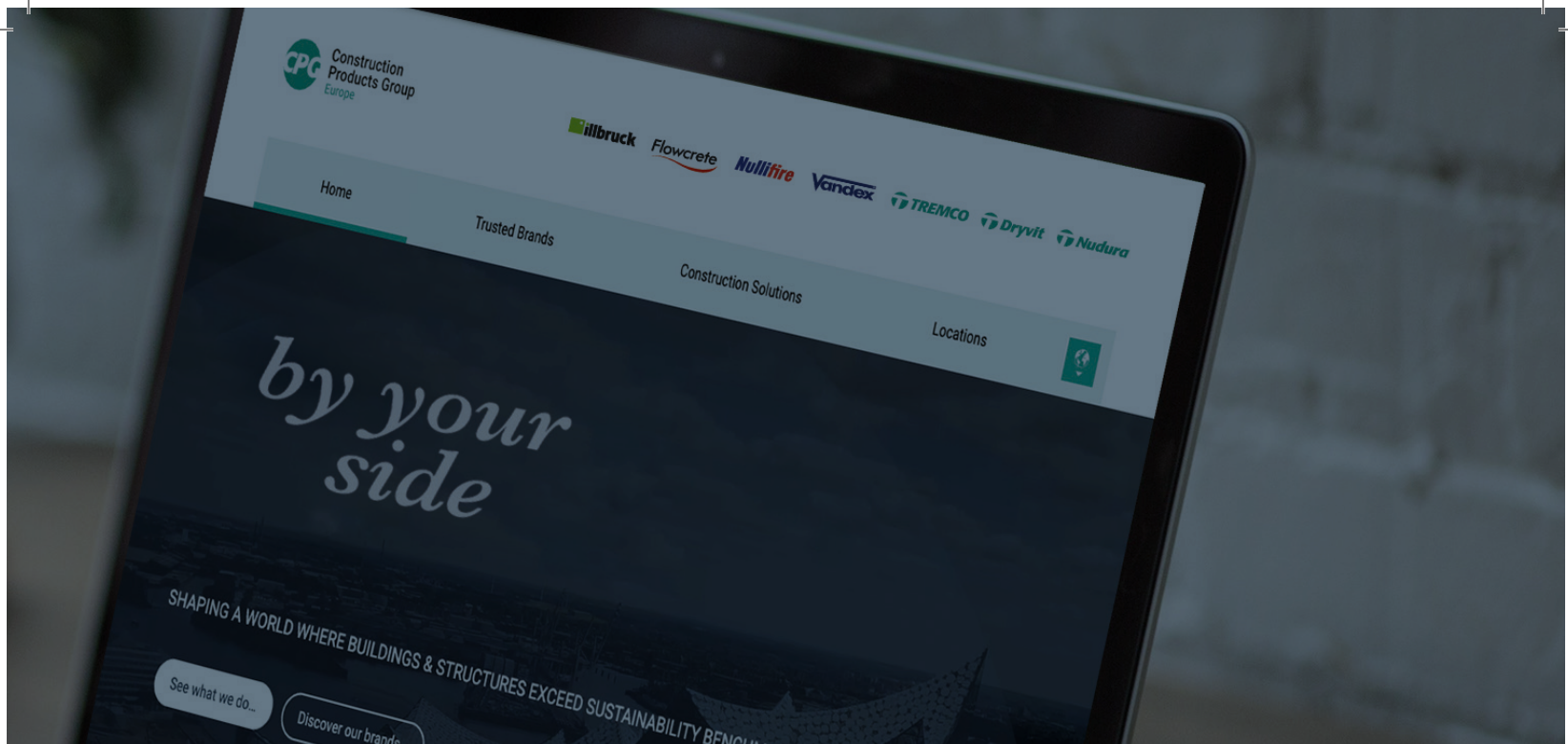


ENGAGEMENT



SUSTAINABLE  
DEVELOPMENT





## Delivering World-Class Construction Product Solutions.

The product brands housed within CPG Europe cover a wide array of different construction needs and provide a wealth of complex services, support and systems that are rarely found together under one roof.



### Sealing, bonding & insulation

Window Insulation, Façade Construction, Exterior Insulation & EIFS, Structural & Inplant Glazing, Insulated Concrete Forms (ICFs)



### Passive fire protection

Intumescent Coatings, Fire Stopping



### Flooring

Seamless Resin Flooring, Subfloor Preparation, Car Parking Structures



### Waterproofing

Potable & Waste Water Industry, Balconies, Terraces, Basements & Foundations



### Roofing

Liquid Applied Systems, Felt Systems, Vegetated Roofing





**Construction  
Products Group**  
Europe

Tremco CPG UK Ltd  
Coupland Road, Hindley Green  
Wigan  
WN2 4HT UK

+44 (0) 1942 251400  
[hello@cpg-europe.com](mailto:hello@cpg-europe.com)  
[www.cpg-europe.com](http://www.cpg-europe.com)