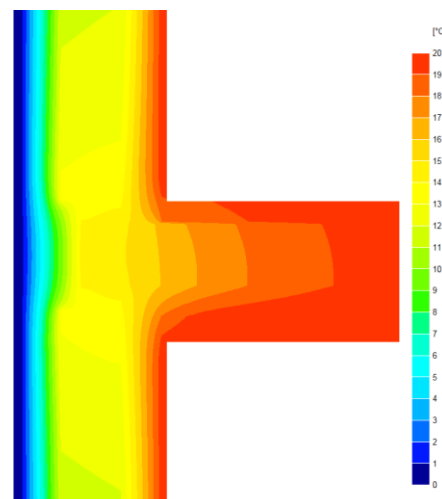
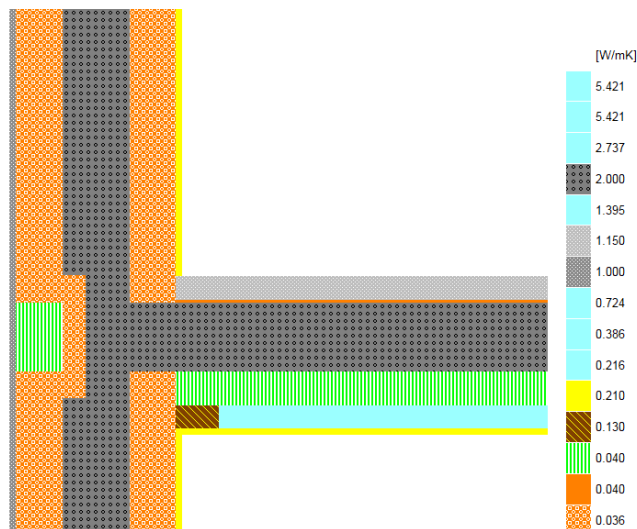


Certificate No:	WRTM – 000072 vs. 0	Issued:	29 August 2019
Issued to: Jean-Marc Bouvier Nudura Corporation International Sales & Field Support Tel: Mob +44 (0) 7766 118711 Email: jmb@nudura.com www.nudura.com	General Construction Specification: (see detail below for full construction)	Main/Load-bearing:	152mm (nominal) Dense Concrete Core, $\lambda \leq 2.50$
		Insulation:	2x 102mm layers of EPS, $\lambda = 0.036$
		Concrete Floor:	Cast in situ, 6mm acoustic mat, 75mm MW with ceiling below
		Cladding:	9mm of Render OR 102mm Brick OR other Cladding
	Description:	ICF Wall, Party Floor+EPS, Between Dwellings (Flats)	
	Reference:	E7	Party Floor with EPS insert 'thermal break', Standard Wall



Temperature Distribution

Linear Thermal Transmittance
W/m.K

$\Psi =$ 0.084

Temperature Factor³ for Humidity and Mould

$f =$ 0.935

Calculation Prepared By: Trefor Jones

Notes:

- Ψ and f are only valid for the detail drawn and described above.
- U-values are within the ranges of; for the flanking walls $U = 0.16 \text{ W/m}^2\text{.K}$ +/- 10% (external brick with cavity $U = 0.159$, thin render $U = 0.167$).
- In dwellings, a temperature factor f that is >0.75 would avoid the risk of mould growth. For other nations, jurisdictions and climates, other standards may apply. E.g. 0.65; Switzerland: 0.75; Belgium: 0.7; Germany: 0.7; Finland: 0.87. French, German and other standards often do not indicate a single number for acceptable risk, but are dependent on circumstances.
- Calculations have been performed in accordance with:
 - EN ISO 10211_2007** (British Standards)
 - IP 1/06 & BR497** (BRE Press)
 and with reference to the following publications:
 - EN ISO 6946** (British Standards)
 - BR443** (BRE Press)