



REBAR TABLES

Insulated Concrete Forms by Nudura

BASIS OF DESIGN & GENERAL USAGE

Nudura is an Insulated Concrete Formwork (ICF) system which comprises of prefabricated polystyrene form work blocks reinforced with plastic webs with notches for placing reinforcement. Nudura has commissioned JMS Engineers to provide design tables and typical details with a focus on structures falling within Class 1 disproportionate collapse requirements and a particular focus on build-ability, to properly utilize Nudura’s ability to reduce construction time on site.

It is important to note that the tables are only intended to illustrate the capabilities and limitations of the Nudura ICF product and do not replace full structural calculations by a suitably qualified structural engineer.

Lintels:

- Lintels for various reinforcement and geometric arrangements were designed in accordance with Eurocode 2 and the corresponding UK National Annex.
- The ultimate shear resistance is calculated for lintels not requiring shear reinforcement (links/stirrups). The ultimate bending moment resistance is calculated for lintels not requiring compression reinforcement (top bars).
- Triangulation to load on lintel should not be used for ICF walls.
- Concrete grade is taken to be C20/25 (fck = 20N/mm2) and maximum aggregate size is taken to be 12mm.
- Reinforcement grade is 500H (fyk = 500N/mm2) and cover to bottom and sides is taken to be 20mm.
- For practicality and ease of construction the number of bars are limited to 1No. for the 4” (100mm) and 6” (150mm) cores.
- Reinforcement bar sizes range from H10s to H20s to represent commonly stocked rebar sizes.
- Maximum safe working loads for common door and window spans were calculated for each reinforcement, core and depth combination. A blanket factor of safety of 2 was used to calculate these values derived from the smaller of the ultimate bending and ultimate shear reinforcement.

Maximum Wall Heights

Maximum achievable wall heights are calculated based on slenderness limits for unreinforced concrete walls as described in Eurocode 2. To provide realistically achievable heights the following nominal loads (based on the ground floor of a typical 2 storey residential building with timber floors and trussed rafters) were also applied:

- Wind Pressure = 0.75kN/m
- Dead Load = 15kN/m
- Live Load = 10kN/m

It is important to note that the maximum unreinforced wall height check represents the first step in checking if a certain height of wall is acceptable to be unreinforced for a given core thickness. Achievable wall heights quoted may be further limited if heavier or more eccentric loads are present.

Core thicknesses were limited to 4-8” (100-200mm) which are what would be realistically used for structures falling within Class 1 disproportionate collapse requirements.

Where large openings, which are greater than 1/3 of the wall height and 10% of the total area, are present, then the walls either side of and between the openings should be checked separately.

Walls with chases or recesses were not considered.

BASIS OF DESIGN & GENERAL USAGE

Retaining Walls:

- Only cantilevered, straight-backed retaining walls were considered for the tables and details provided. Propped, stepped or tapered retaining walls were not considered.
- Only the design of the stem was carried out, as this is the part of the retaining wall formed of the Nudura ICF product. Additionally, the design of the base was deemed to be too influenced by site specific conditions and should be designed by a suitably qualified structural engineer. The following loads/soil parameters were considered for the design of the stem:
 - Soil density =18kN/m3
 - Nominal surcharge =10kN/m2
 - Angle of repose =30°

Groundwater was not considered. If a high water table is present then the retaining wall falls outside the scope of these tables.

Maximum wall heights were based on a basic l/d check as per Eurocode 2. Higher wall heights may be achievable by introducing props or lower surcharges.

Reinforcement was placed at fixed spacings according to the geometric properties of the form work blocks (203mm c/c for vertical bars and 457mm c/c for horizontal bars) to maximize speed and ease of construction. Corresponding ultimate shear and moment capacities were calculated and tabulated for each wall core and reinforcement combination. Closer spacings, albeit more difficult to construct, can be used to improve the performance of the retaining wall.

Concrete grade used was C25/30, a maximum aggregate size of 12mm and reinforcement cover was determined by the placement and size of horizontal reinforcement.

In addition to the typical detail and corresponding maximum wall height and resistance table, a full conservative design for a typical 1m high retaining wall was also provided. The design was based on the same soil and load parameters described above.

| CORE WIDTH (mm) | LEVEL DEPTH (mm) | REINFORCEMENT | ULTIMATE MOMENT CAPACITY (kNm) | MAXIMUM SHEAR WORKING LOAD (kN/m) FOR CLEAR SPAN (mm) | | | | | | | | | | | |
|-----------------|------------------|---------------|--------------------------------|---|------|------|------|------|------|------|------|------|------|------|------|
| | | | | 600 | 800 | 1000 | 1200 | 1400 | 1600 | 1800 | 2000 | 2200 | 2400 | 2600 | 3000 |
| 200 | 100 | 1001 | 5.4 | 8.7 | 14.5 | 8.8 | 7.1 | 8.8 | 4.8 | 4.1 | 4.8 | 2.8 | 2.4 | 2.4 | 2.4 |
| | | 1002 | 10.8 | 17.6 | 29.1 | 17.6 | 14.5 | 17.6 | 9.8 | 8.5 | 9.8 | 5.8 | 4.9 | 4.9 | 4.9 |
| | | 1003 | 16.2 | 26.4 | 43.6 | 26.4 | 21.6 | 26.4 | 14.8 | 12.8 | 14.8 | 8.8 | 7.4 | 7.4 | 7.4 |
| | | 1004 | 21.6 | 35.2 | 59.1 | 35.2 | 28.9 | 35.2 | 20.8 | 18.1 | 20.8 | 12.4 | 10.5 | 10.5 | 10.5 |
| 250 | 125 | 1011 | 5.7 | 9.3 | 15.2 | 9.3 | 7.6 | 9.3 | 5.2 | 4.5 | 5.2 | 3.1 | 2.7 | 2.7 | 2.7 |
| | | 1012 | 11.4 | 18.5 | 30.4 | 18.5 | 15.2 | 18.5 | 10.4 | 9.0 | 10.4 | 6.2 | 5.3 | 5.3 | 5.3 |
| | | 1013 | 17.1 | 27.8 | 45.6 | 27.8 | 22.8 | 27.8 | 16.2 | 13.9 | 16.2 | 9.8 | 8.4 | 8.4 | 8.4 |
| | | 1014 | 22.8 | 37.1 | 60.8 | 37.1 | 30.4 | 37.1 | 21.6 | 18.7 | 21.6 | 12.8 | 10.9 | 10.9 | 10.9 |
| 300 | 150 | 1021 | 5.9 | 9.5 | 15.8 | 9.5 | 7.8 | 9.5 | 5.5 | 4.7 | 5.5 | 3.3 | 2.9 | 2.9 | 2.9 |
| | | 1022 | 11.8 | 19.0 | 31.2 | 19.0 | 15.8 | 19.0 | 10.8 | 9.3 | 10.8 | 6.5 | 5.6 | 5.6 | 5.6 |
| | | 1023 | 17.7 | 28.5 | 46.5 | 28.5 | 23.2 | 28.5 | 16.5 | 14.1 | 16.5 | 9.9 | 8.5 | 8.5 | 8.5 |
| | | 1024 | 23.6 | 38.0 | 61.8 | 38.0 | 30.8 | 38.0 | 22.0 | 18.9 | 22.0 | 13.2 | 11.3 | 11.3 | 11.3 |
| 350 | 175 | 1031 | 6.2 | 10.0 | 16.5 | 10.0 | 8.2 | 10.0 | 6.0 | 5.1 | 6.0 | 3.6 | 3.1 | 3.1 | 3.1 |
| | | 1032 | 12.4 | 20.0 | 32.0 | 20.0 | 16.4 | 20.0 | 11.2 | 9.6 | 11.2 | 7.0 | 6.0 | 6.0 | 6.0 |
| | | 1033 | 18.6 | 29.5 | 47.5 | 29.5 | 24.0 | 29.5 | 17.0 | 14.5 | 17.0 | 10.2 | 8.7 | 8.7 | 8.7 |
| | | 1034 | 24.8 | 39.0 | 63.0 | 39.0 | 31.2 | 39.0 | 22.5 | 19.2 | 22.5 | 13.6 | 11.7 | 11.7 | 11.7 |
| 400 | 200 | 1041 | 6.5 | 10.3 | 16.8 | 10.3 | 8.5 | 10.3 | 6.3 | 5.4 | 6.3 | 3.8 | 3.3 | 3.3 | 3.3 |
| | | 1042 | 13.0 | 20.3 | 32.3 | 20.3 | 16.8 | 20.3 | 11.5 | 9.9 | 11.5 | 7.2 | 6.2 | 6.2 | 6.2 |
| | | 1043 | 19.5 | 29.8 | 47.8 | 29.8 | 24.3 | 29.8 | 17.3 | 14.8 | 17.3 | 10.4 | 9.0 | 9.0 | 9.0 |
| | | 1044 | 25.9 | 40.0 | 63.3 | 40.0 | 32.0 | 40.0 | 22.8 | 19.4 | 22.8 | 13.8 | 11.9 | 11.9 | 11.9 |
| 450 | 225 | 1051 | 6.8 | 10.6 | 17.1 | 10.6 | 8.8 | 10.6 | 6.6 | 5.7 | 6.6 | 4.0 | 3.5 | 3.5 | 3.5 |
| | | 1052 | 13.6 | 20.6 | 32.6 | 20.6 | 17.1 | 20.6 | 11.8 | 10.2 | 11.8 | 7.4 | 6.4 | 6.4 | 6.4 |
| | | 1053 | 20.4 | 30.1 | 48.1 | 30.1 | 24.6 | 30.1 | 17.6 | 15.1 | 17.6 | 10.6 | 9.2 | 9.2 | 9.2 |
| | | 1054 | 26.8 | 40.3 | 63.6 | 40.3 | 32.3 | 40.3 | 23.1 | 19.6 | 23.1 | 14.0 | 12.1 | 12.1 | 12.1 |
| 500 | 250 | 1061 | 7.1 | 10.9 | 17.4 | 10.9 | 9.1 | 10.9 | 6.9 | 6.0 | 6.9 | 4.2 | 3.7 | 3.7 | 3.7 |

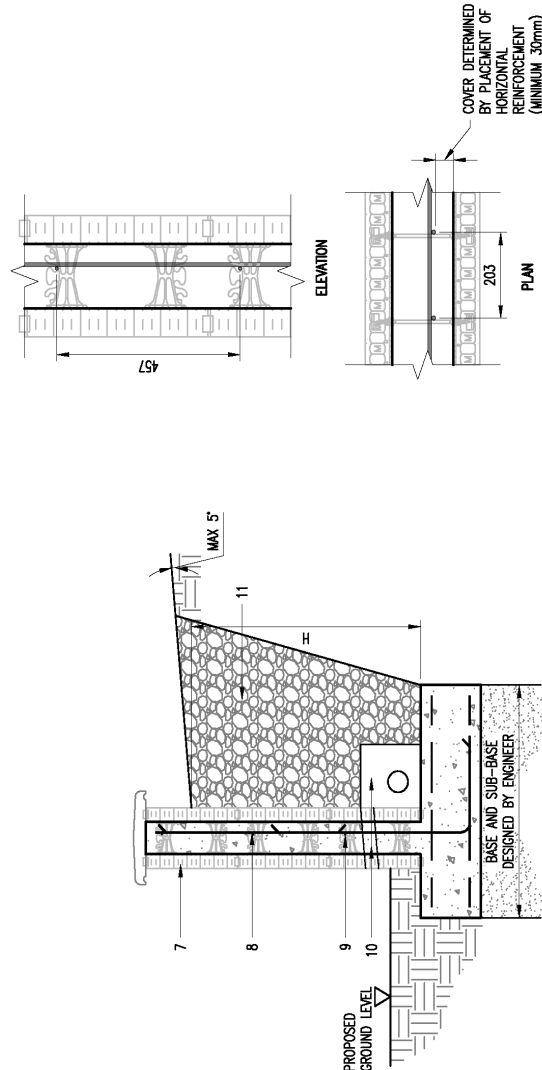
[illegible]

Rebar Tables

Rebar Tables

NUDURA RETAINING WALL NOTES:

1. NUDURA RETAINING WALL NOTES:
DO NOT SCALE THIS DRAWING OR MODEL. ALL DIMENSIONS ARE IN MILLIMETERS UNLESS NOTED OTHERWISE.
2. THESE TABLES ARE ONLY INTENDED TO ILLUSTRATE THE CAPABILITIES AND LIMITATIONS OF THE NUDURA ICE PRODUCT. THEY ARE NOT A REPLACEMENT FOR FULL STRUCTURAL CALCULATIONS BY A SUITABLY QUALIFIED ENGINEER.
3. THESE TABLES ARE BASED ON RETAINING WALL DESIGNS TO BS EN 1992:2004 AND BS EN 1997:2004. MAXIMUM HEIGHTS ARE CALCULATED BASED ON A CONSERVATIVE BASIC 1/3 CHECK AS PER BS EN 1992:2004.
4. THESE TABLES PROVIDE A MAXIMUM ACHIEVABLE HEIGHT AS WELL AS ULTIMATE MOMENT CAPACITY AND ULTIMATE SHEAR CAPACITY FOR THE VARIOUS COMBINATIONS OF CONCRETE CORE AND REINFORCEMENT (AT FIXED SPACINGS) BASED ON PRACTICALITY OF INSTALLATION WHILST USING NUDURA ICE PRODUCTS.
5. THE MAXIMUM ACHIEVABLE HEIGHT IS BASED ON A CANTILEVER RETAINING WALL. MAXIMUM WALL HEIGHTS MAY NOT BE ACHIEVABLE FOR SMALLER BAY DIAMETERS DUE TO DETAILING REQUIREMENTS. LARGER HEIGHTS MAY BE ACHIEVABLE WITH LOWER SURCHARGES OR PROPS DESIGNED BY A SUITABLY QUALIFIED ENGINEER.
6. DESIGN IS BASED ON ACTIVE EARTH PRESSURE, WHERE A DESIGN BASED ON AT REST EARTH PRESSURE IS REQUIRED, THESE HEIGHTS MAY NOT BE ACHIEVABLE.
7. NUDURA BLOCKS FILLED WITH MINIMUM RC25/20 CONCRETE WITH 12mm AGGREGATE.
8. VERTICAL BAYS PLACED AT 203mm C/C OR AT EVERY WEB. COVER DETERMINED BY DESIGN. MINIMUM COVER TO REINFORCEMENT (MINIMUM COVER TO SIZES = 30mm).
9. PLACEMENT OF HORIZONTAL REINFORCEMENT (MINIMUM COVER TO SIZES = 30mm). HORIZONTAL REINFORCEMENT TO BE PLACED IN SECOND NOTCH Ø457mm C/C O. EVERY OTHER WEB.
10. IT IS PRESUMED THAT AN ADEQUATE DRAINAGE SYSTEM WILL BE PROVIDED. THE PRESENCE OF GROUNDWATER HAS NOT BEEN CONSIDERED.
11. SELECTED GRANULAR BACKFILL.
12. ALL REINFORCEMENT DETAILING IS TO BE CARRIED OUT BY A SUITABLY QUALIFIED PROFESSIONAL.



TYPICAL SECTION THROUGH NUDURA RETAINING WALL
BASED ON NOMINAL SURCHARGE=10kN/m²

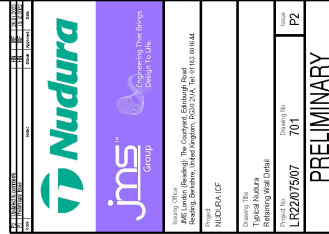
SCALE 1:20

TYPICAL NUDURA RETAINING WALL REINFORCEMENT PLACEMENT DETAIL

SCALE 1-10

| CORE (mm) | MAX H (mm) | MAX H IN COURSES (COURSES - H IN mm) | VERTICAL REINFORCEMENT | HORIZONTAL REINFORCEMENT | ULTIMATE MOMENT CAPACITY (kNm/m) | ULTIMATE SHEAR CAPACITY (kN/m) |
|-----------|------------|--------------------------------------|------------------------|--------------------------|----------------------------------|--------------------------------|
| 150 | 1500 | 3 - 1371 | H10 | H8 | 16.0 | 51.5 |
| | | | H12 | H8 | 22.2 | 57.7 |
| | | | H16 | H12 | 35.7 | 69.0 |
| | | | H20 | H16 | 47.6 | 79.0 |
| 200 | 2200 | 4 - 1828 | H10 | H8 | 24.3 | 75.2 |
| | | | H12 | H8 | 34.5 | 76.0 |
| | | | H16 | H12 | 57.6 | 91.3 |
| | | | H20 | H16 | 82.9 | 104.9 |
| 250 | 2800 | 6 - 2742 | H10 | H8 | 30.4 | 94.0 |
| | | | H12 | H8 | 43.5 | 93.6 |
| | | | H16 | H12 | 74.0 | 106.2 |
| | | | H20 | H20 | 108.5 | 122.3 |
| 300 | 3400 | 7 - 3199 | H10 | H8 | 40.1 | 114.4 |
| | | | H12 | H8 | 57.5 | 114.1 |
| | | | H16 | H12 | 100.3 | 121.6 |
| | | | H20 | H16 | 149.5 | 140.6 |

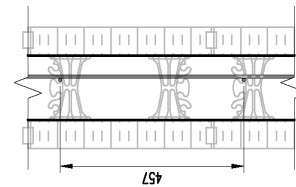
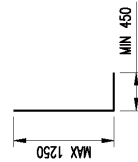
MAXIMUM WALL HEIGHTS MAY NOT BE ACHIEVABLE FOR SMALLER BAR DIAMETERS DUE TO DRAINING REQUIREMENTS.



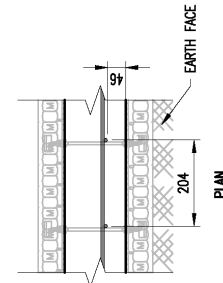
Original Sheet Size: A3

NUDURA RETAINING WALL NOTES:

1. **NODURA RETAINING WALL NOTES:**
DO NOT SCALE THIS DRAWING OR MODEL. ALL DIMENSIONS ARE IN MILLIMETERS UNLESS NOTED OTHERWISE.
2. RETAINING WALL IS DESIGNED TO BS EN 1992:2004 AND BS EN 1997:2004.
3. THIS DESIGN IS ONLY INTENDED FOR LANDSCAPING USE. WHERE A RETAINING WALL IS REQUIRED AS PART OF A PERMANENT STRUCTURE, THIS DETAIL DOES NOT APPLY.
4. NODURA BLOCKS FILLED WITH MINIMUM R25/30 CONCRETE WITH 12mm AGGREGATE.
5. HB L-BARS PLACED AT 203mm c/c OR AT EVERY WEB. COVER 50mm BOTTOM AND 46mm SIDE.



EVALUATION

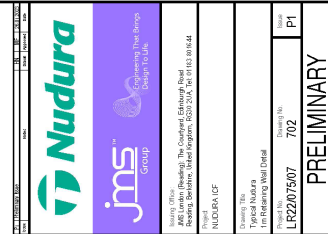
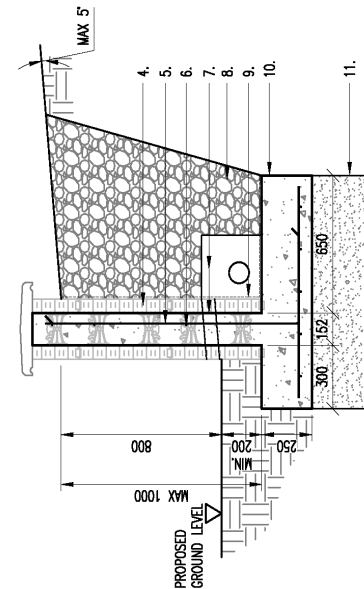


**TYPICAL NUDURA RETAINING WALL
REINFORCEMENT PLACEMENT DETAIL**

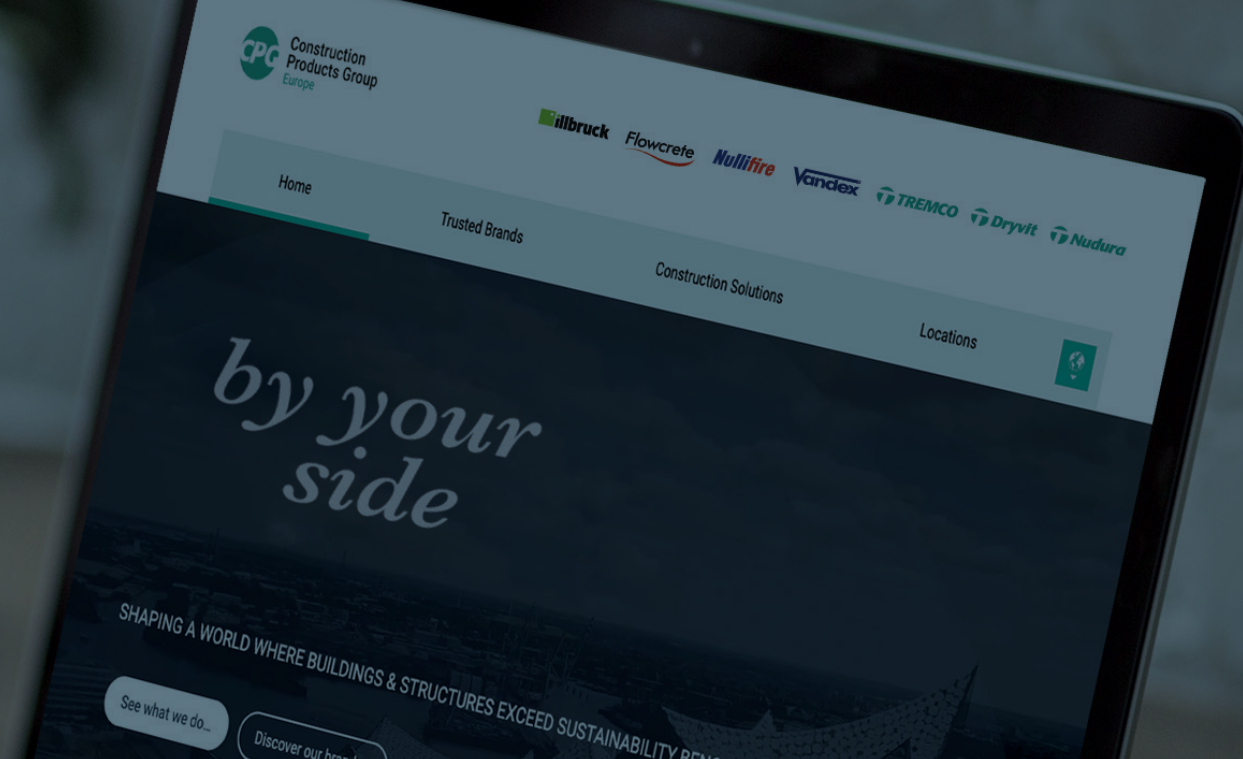
SCALE 1:10

TYPICAL SECTION THROUGH 1m NUDURA RETAINING WALL

BASED ON NOMINAL SURCHARGE=10kN/m²



Original Content (Doc. A2)



CPG Europe manufactures high performance building materials in order to solve the complex challenges faced by today's construction industry. It is the home for multiple European construction product brands, including illbruck, Flowcrete, Nullifire, Tremco, Vandex, Dryvit and Nudura. With over 1,400 employees across Europe, we are committed to being by your side to shape a world where buildings and structures save energy, last longer and exceed sustainability benchmarks.

From joint sealing, bonding and insulation through to passive fire protection, flooring, waterproofing and roofing solutions- the product brands housed within CPG Europe cover a wide array of different construction needs. Combined with the wealth of expertise, services and support we provide a truly unique offer - to make our customers more successful time after time.

CPG Europe is part of RPM International Inc. - one of the world's leading construction products companies for both the industrial and consumer segments.

Europe's leading construction products brands...

Our Values



COLLABORATION



HONESTY &
INTEGRITY



RESPECT



ENGAGEMENT



SUSTAINABLE
DEVELOPMENT

Delivering World-Class Construction Product Solutions.

The product brands housed within CPG Europe cover a wide array of different construction needs and provide a wealth of complex services, support and systems that are rarely found together under one roof.



Intumescent Coatings, Fire Stopping



Potable & Waste Water Industry, Balconies and Podia, Terraces, Basements & Foundations



Window Insulation, Façade Construction, Exterior Insulation & EIFS, Structural & Inplant Glazing



Seamless Resin Flooring, Subfloor Preparation, Car Parking Structures



Liquid Applied Systems, Felt Systems, Vegetated Roofing



Tremco CPG UK Ltd
Coupland Road, Hindley Green
Wigan
WN2 4HT UK

+44 (0) 1942 251400
hello@cpg-europe.com
www.cpg-europe.com