

CEMENT BOARD MD FINISH SYSTEM™



**An Exterior Finish System Applied Over Exterior Cement Board
With A Secondary Weather Resistive Barrier And Moisture Drainage**

Cement Board MD Finish System Installation Details

Table of Contents

DETAIL

PAGE

NOTE

System Layout	CBMD 0.0.01
Termination at Foundation- Steel Framed	CBMD 0.0.02
Termination at Foundation- Wood Framed	CBMD 0.0.03
Expansion Joint at Floor Line	CBMD 0.0.04
Opening Preparation for Storefront Window	CBMD 0.0.05
Storefront Window Sill/Jamb	CBMD 0.0.06
Storefront Window Head	CBMD 0.0.07
Flanged Window Sill/Jamb	CBMD 0.0.08
Flanged Window Head	CBMD 0.0.09
Railing Attachment	CBMD 0.0.10
Vent Penetration	CBMD 0.0.11
Termination at Sloped Roof	CBMD 0.0.12
Parapet/Wall Intersection	CBMD 0.0.13
Parapet Termination	CBMD 0.0.14
Termination at Deck	CBMD 0.0.15
Soffit/Fascia Termination	CBMD 0.0.16
Vertical Control/Expansion Joint	CBMD 0.0.17
Outside Corner	CBMD 0.0.18
EPS Shape Attachment	CBMD 0.0.19

DRYVIT MAKES NO REPRESENTATION REGARDING CONFORMITY OF ITS SUGGESTIONS TO MODEL BUILDING CODES, ENGINEERING CRITERIA, SPECIFIC APPLICATIONS OR PROJECT LOCATIONS. ALL COMPONENTS INDICATED IN ILLUSTRATIONS, AS WELL AS OTHERS THAT MAY BE REQUIRED FOR THE INTEGRITY OF THE SYSTEM SHALL BE DESIGNED, DETAILED AND ENGINEERED BY REPRESENTATIVES OF THE ARCHITECT, OWNER OR CONTRACTOR TO BE IN CONFORMANCE WITH MODEL CODES, ARCHITECTURAL AND ENGINEERING REQUIREMENTS PERTAINING TO SPECIFIC BUILDING PROJECTS.

DRYVIT MAKES NO WARRANTY, EXPRESSED OR IMPLIED, AS TO THE ARCHITECTURAL DESIGN, ENGINEERING, OR WORKMANSHIP OF PROJECTS UTILIZING DRYVIT SYSTEMS OR PRODUCTS.

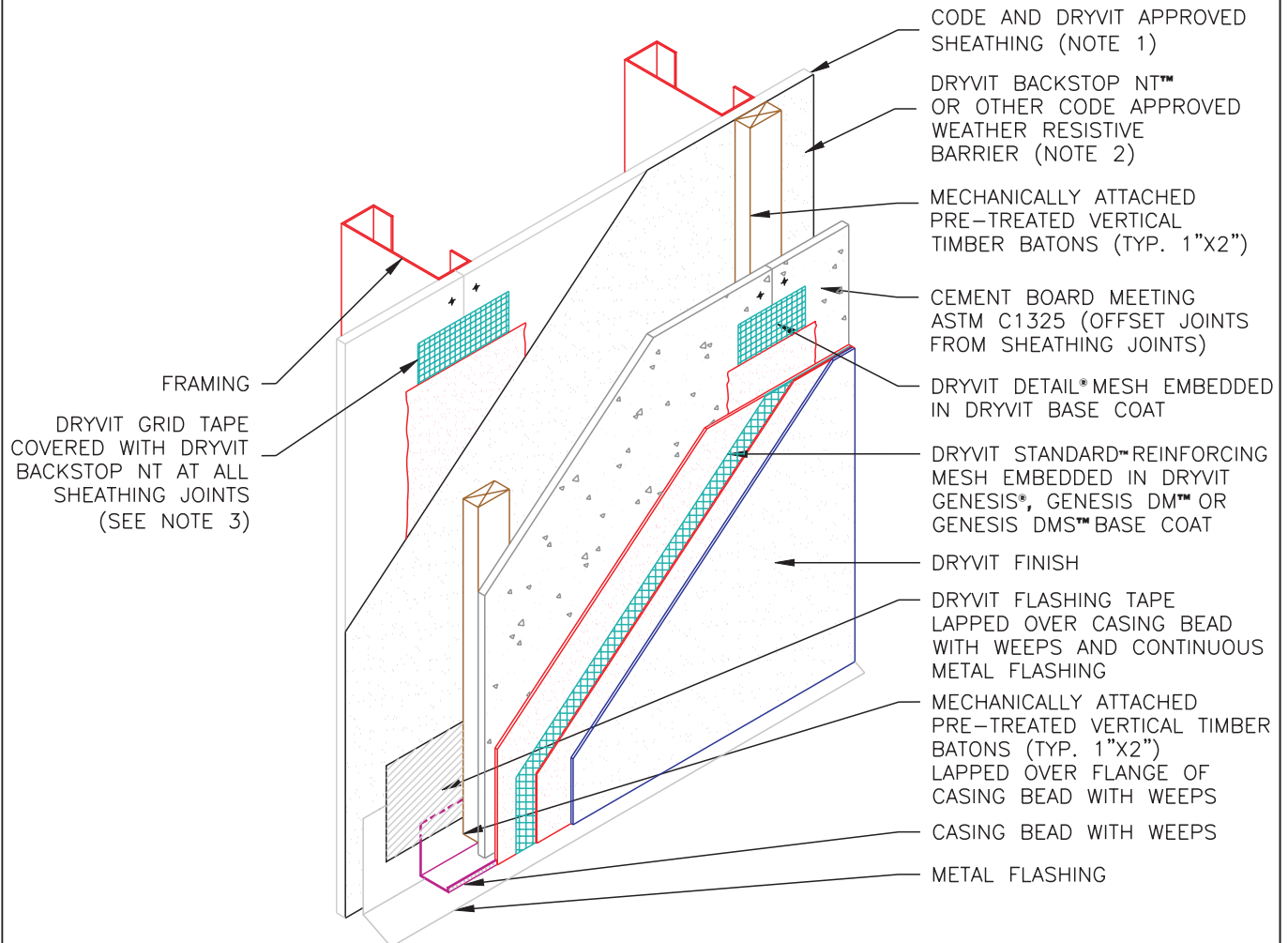
THE LIABILITIES OF DRYVIT SHALL BE AS STATED IN THE DRYVIT STANDARD WARRANTY. CONTACT DRYVIT FOR A FULL AND COMPLETE COPY OF THIS WARRANTY.

Cement Board MD®

Table Of Contents

The architecture, engineering and design of the project using the Dryvit products is the responsibility of the project's design professional. All systems must comply with local building codes and standards. This detail is for general information and guidance only and Dryvit specifically disclaims any liability for the use of this detail and for the architecture, design, engineering or workmanship of any project. The project design professional determines, in its sole discretion, whether this detail or a functionally equivalent alternative is best suited for the project. Use of a functionally equivalent detail does not violate Dryvit's warranty. This detail is subject to change without notice. Contact Dryvit to insure you have the most recent version.





Cement Board MD®

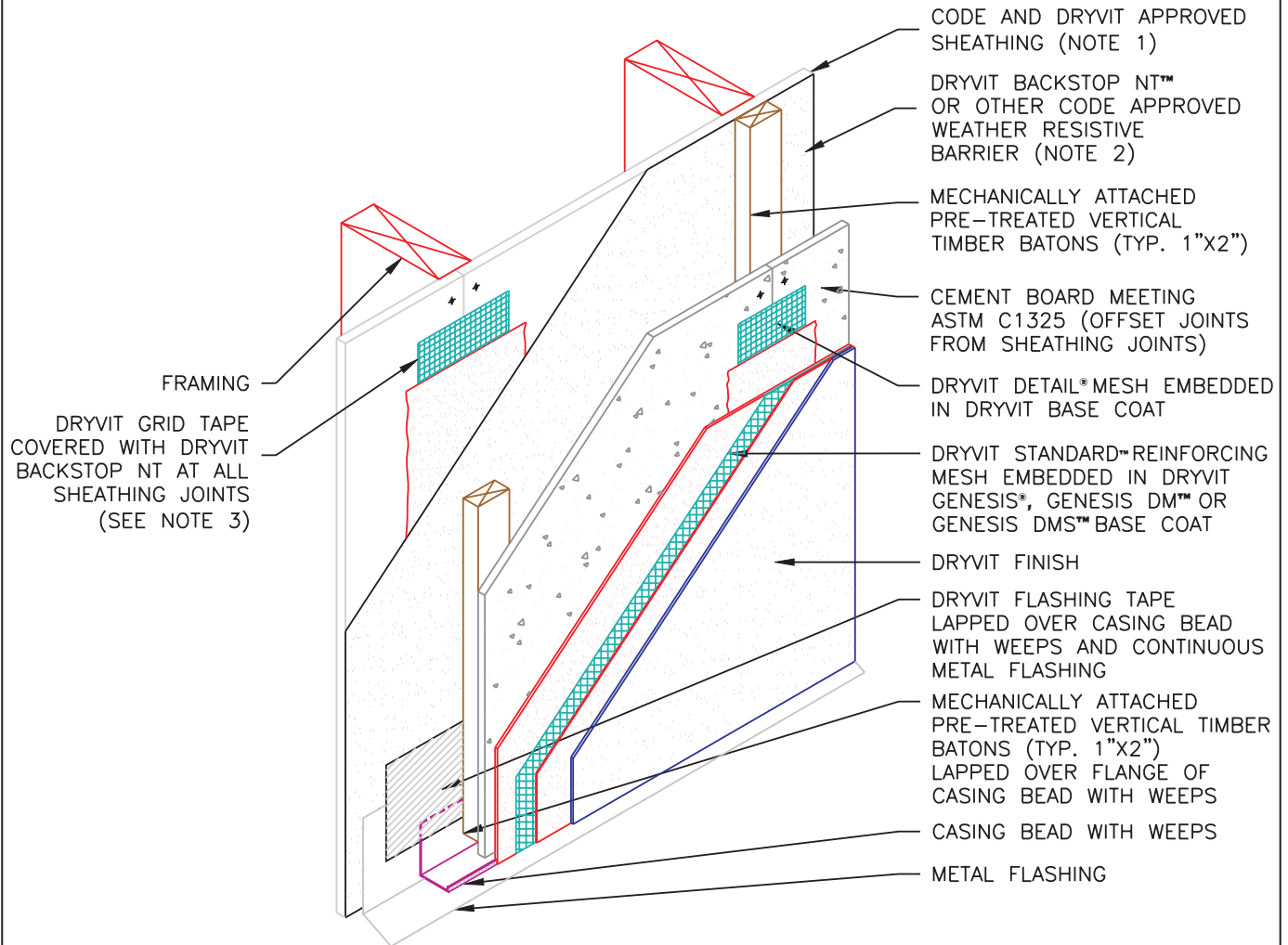
System Layout- Steel Framed

NOTE:

- 1: OSB SHEATHING WILL REQUIRE A SHEET TYPE WEATHER RESISTIVE BARRIER IN LIEU OF BACKSTOP NT
- 2: SHEET TYPE WEATHER RESISTIVE MEMBRANES SHALL BE INSTALLED IN A WEATHER BOARD FASHION
- 3: DRYVIT GRID TAPE NOT REQUIRED WHEN SHEET TYPE WEATHER RESISTIVE BARRIERS ARE SPECIFIED

The architecture, engineering and design of the project using the Dryvit products is the responsibility of the project's design professional. All systems must comply with local building codes and standards. This detail is for general information and guidance only and Dryvit specifically disclaims any liability for the use of this detail and for the architecture, design, engineering or workmanship of any project. The project design professional determines, in its sole discretion, whether this detail or a functionally equivalent alternative is best suited for the project. Use of a functionally equivalent detail does not violate Dryvit's warranty. This detail is subject to change without notice. Contact Dryvit to insure you have the most recent version.





Cement Board MD®

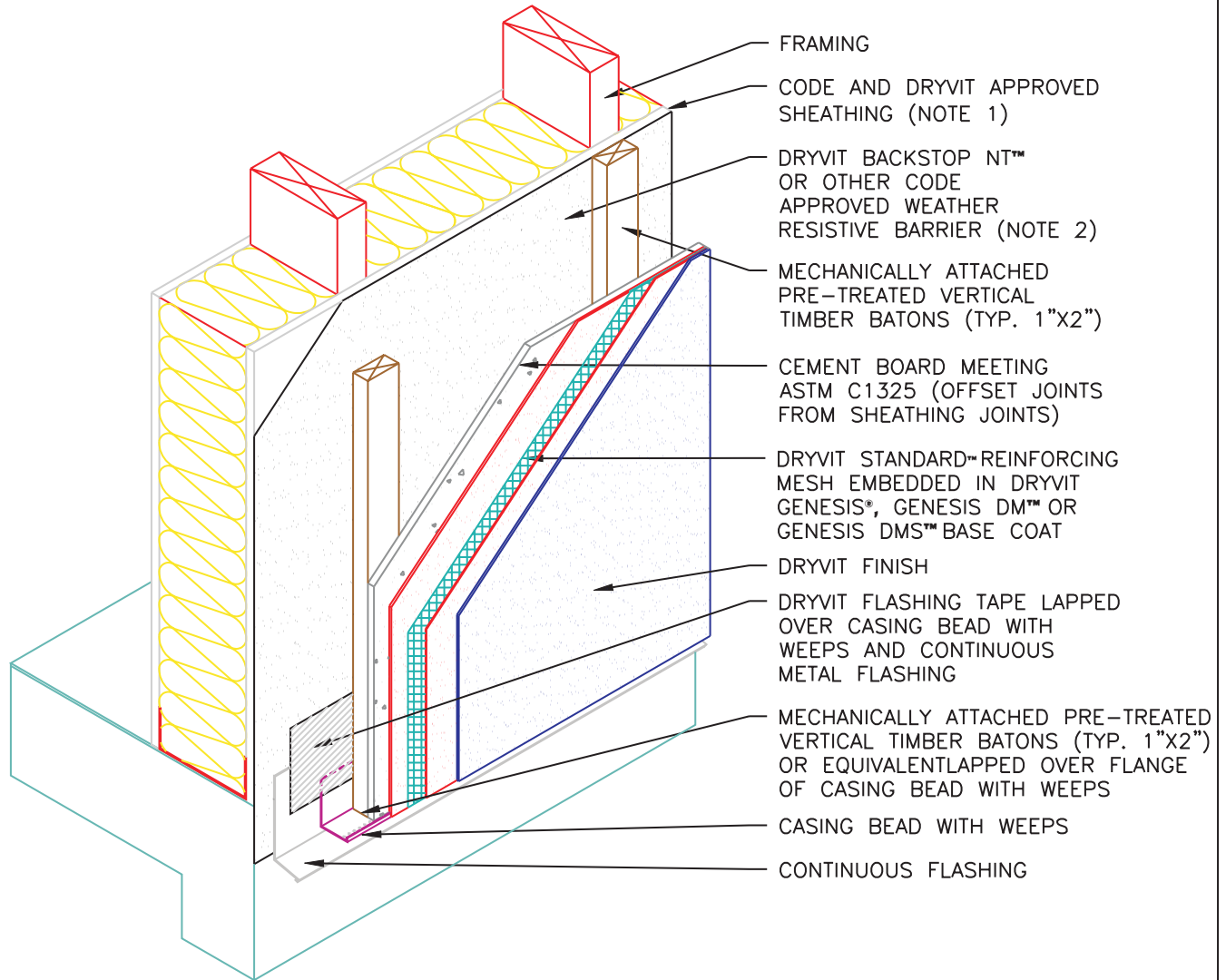
System Layout- Wood Framed

NOTE:

- 1: OSB SHEATHING WILL REQUIRE A SHEET TYPE WEATHER RESISTIVE BARRIER IN LIEU OF BACKSTOP NT
- 2: SHEET TYPE WEATHER RESISTIVE MEMBRANES SHALL BE INSTALLED IN A WEATHER BOARD FASHION
- 3: DRYVIT GRID TAPE NOT REQUIRED WHEN SHEET TYPE WEATHER RESISTIVE BARRIERS ARE SPECIFIED

The architecture, engineering and design of the project using the Dryvit products is the responsibility of the project's design professional. All systems must comply with local building codes and standards. This detail is for general information and guidance only and Dryvit specifically disclaims any liability for the use of this detail and for the architecture, design, engineering or workmanship of any project. The project design professional determines, in its sole discretion, whether this detail or a functionally equivalent alternative is best suited for the project. Use of a functionally equivalent detail does not violate Dryvit's warranty. This detail is subject to change without notice. Contact Dryvit to insure you have the most recent version.





Cement Board MD®

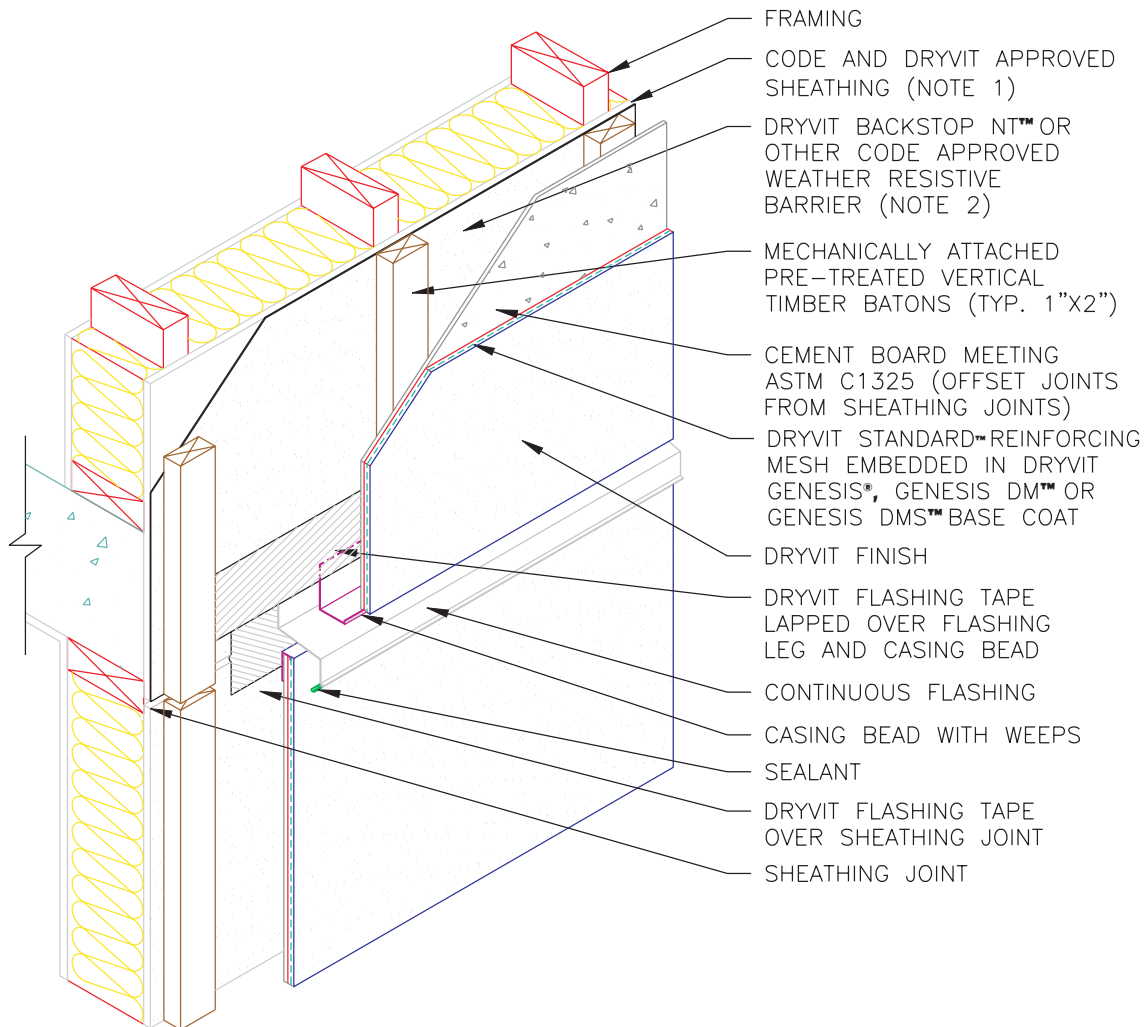
Termination at Foundation

NOTE:

- 1: OSB SHEATHING WILL REQUIRE A SHEET TYPE WEATHER RESISTIVE BARRIER IN LIEU OF BACKSTOP NT
- 2: SHEET TYPE WEATHER RESISTIVE MEMBRANES SHALL BE INSTALLED IN A WEATHER BOARD FASHION

The architecture, engineering and design of the project using the Dryvit products is the responsibility of the project's design professional. All systems must comply with local building codes and standards. This detail is for general information and guidance only and Dryvit specifically disclaims any liability for the use of this detail and for the architecture, design, engineering or workmanship of any project. The project design professional determines, in its sole discretion, whether this detail or a functionally equivalent alternative is best suited for the project. Use of a functionally equivalent detail does not violate Dryvit's warranty. This detail is subject to change without notice. Contact Dryvit to insure you have the most recent version.





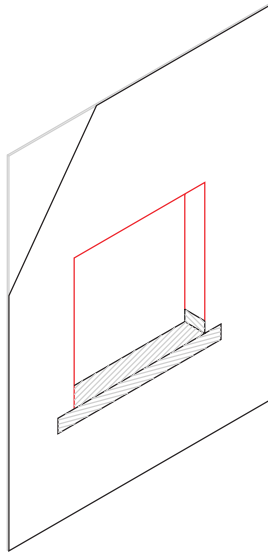
Cement Board MD®

Expansion Joint at Floor Line

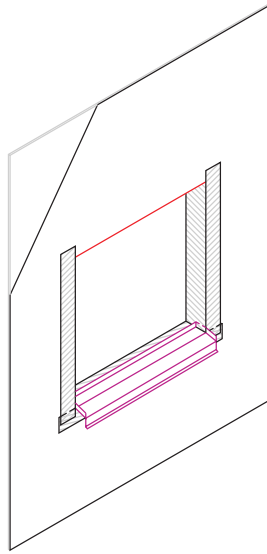
NOTE:

- 1: OSB SHEATHING WILL REQUIRE A SHEET TYPE WEATHER RESISTIVE BARRIER IN LIEU OF BACKSTOP NT
- 2: SHEET TYPE WEATHER RESISTIVE MEMBRANES SHALL BE INSTALLED IN A WEATHER BOARD FASHION

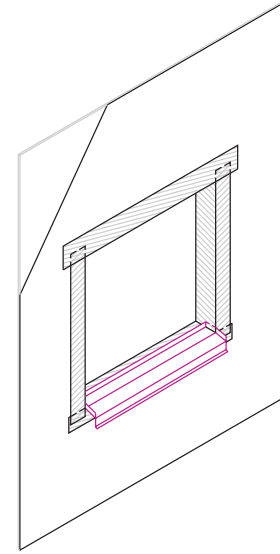
The architecture, engineering and design of the project using the Dryvit products is the responsibility of the project's design professional. All systems must comply with local building codes and standards. This detail is for general information and guidance only and Dryvit specifically disclaims any liability for the use of this detail and for the architecture, design, engineering or workmanship of any project. The project design professional determines, in its sole discretion, whether this detail or a functionally equivalent alternative is best suited for the project. Use of a functionally equivalent detail does not violate Dryvit's warranty. This detail is subject to change without notice. Contact Dryvit to insure you have the most recent version.



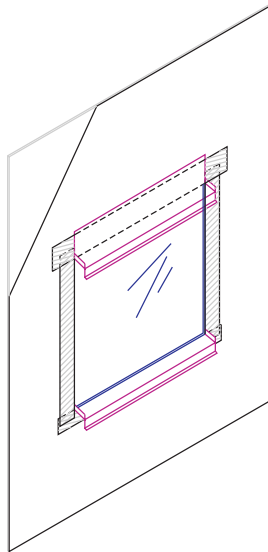
STEP 1: APPLY DRYVIT BACKSTOP NT™ TO THE FACE OF THE WALL AND INSTALL DRYVIT FLASHING TAPE AT SILL AND LAP ONTO JAMB



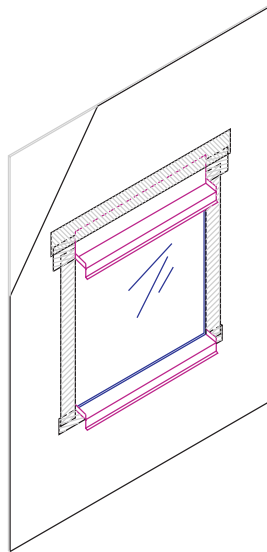
STEP 2: INSTALL SILL PAN FLASHING
APPLY DRYVIT FLASHING TAPE AT JAMBS AND LAP ONTO UPTURNED EDGE OF PAN FLASHING



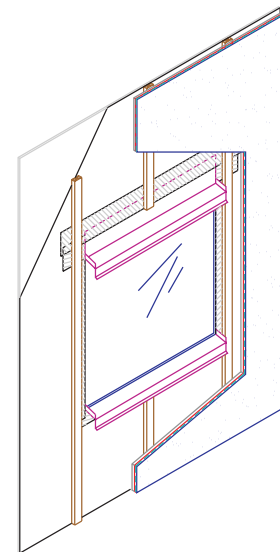
STEP 3: INSTALL HEAD FLASHING TAPE LAPPING OVER JAMB FLASHING



STEP 4: INSTALL WINDOW UNIT AND HEAD FLASHING



STEP 5: APPLY FLASHING TAPE OVER METAL FLASHING AT WINDOW HEAD



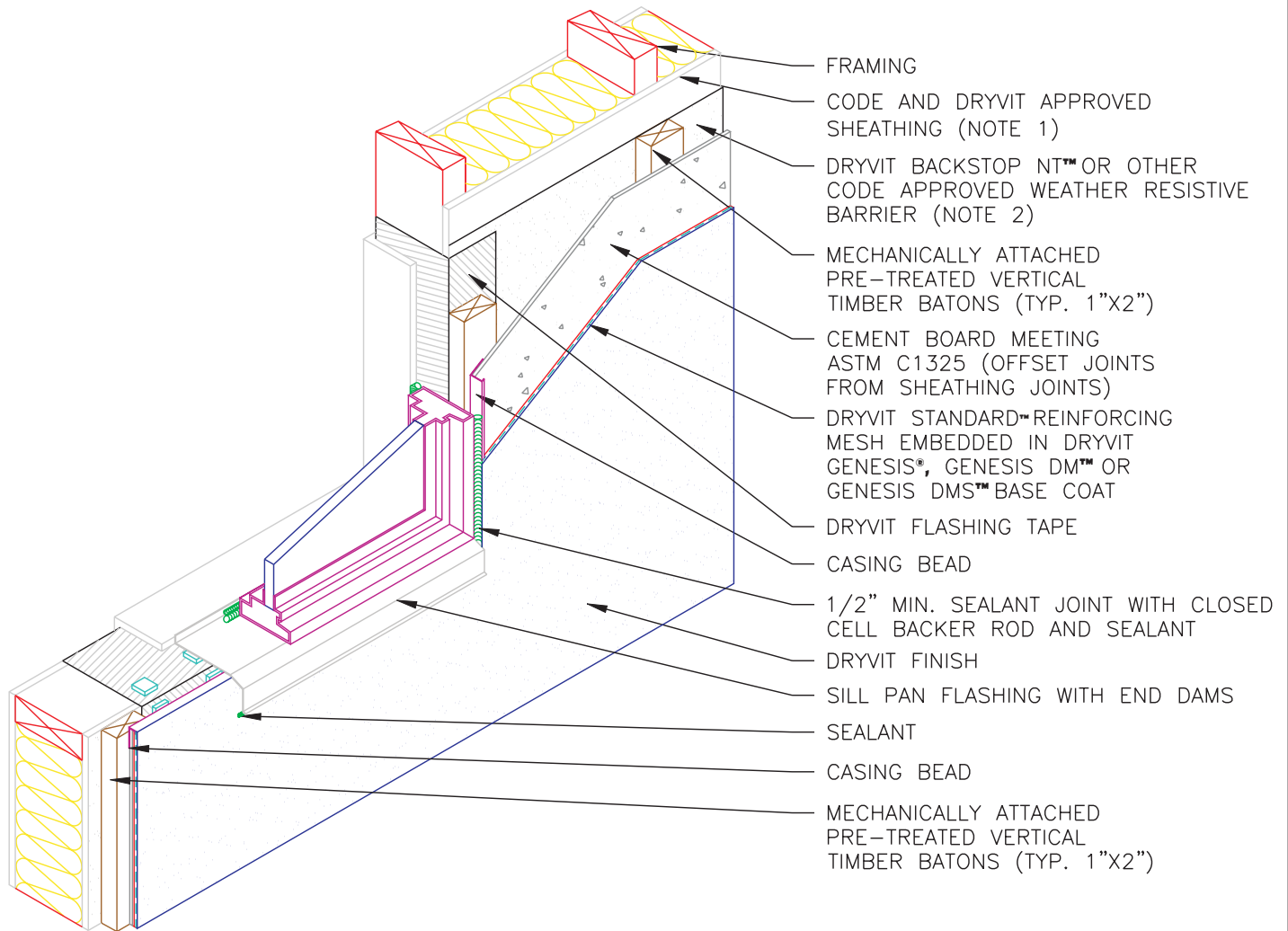
STEP 6: MECHANICALLY ATTACHED PRE-TREATED VERTICAL TIMBER BATONS (TYP. 1"x2") CEMENT BOARD AND COATINGS

Cement Board MD® Opening Preparation for Storefront Window

- NOTE 1:** FLASHING TAPE SHALL EXTEND TO INSIDE FACE OF FRAMING
- 2:** OSB SHEATHING WILL REQUIRE A SHEET TYPE WEATHER RESISTIVE BARRIER
- 3:** SHEET TYPE WEATHER RESISTIVE MEMBRANES SHALL BE INSTALLED IN A WEATHER BOARD FASHION

The architecture, engineering and design of the project using the Dryvit products is the responsibility of the project's design professional. All systems must comply with local building codes and standards. This detail is for general information and guidance only and Dryvit specifically disclaims any liability for the use of this detail and for the architecture, design, engineering or workmanship of any project. The project design professional determines, in its sole discretion, whether this detail or a functionally equivalent alternative is best suited for the project. Use of a functionally equivalent detail does not violate Dryvit's warranty. This detail is subject to change without notice. Contact Dryvit to insure you have the most recent version.





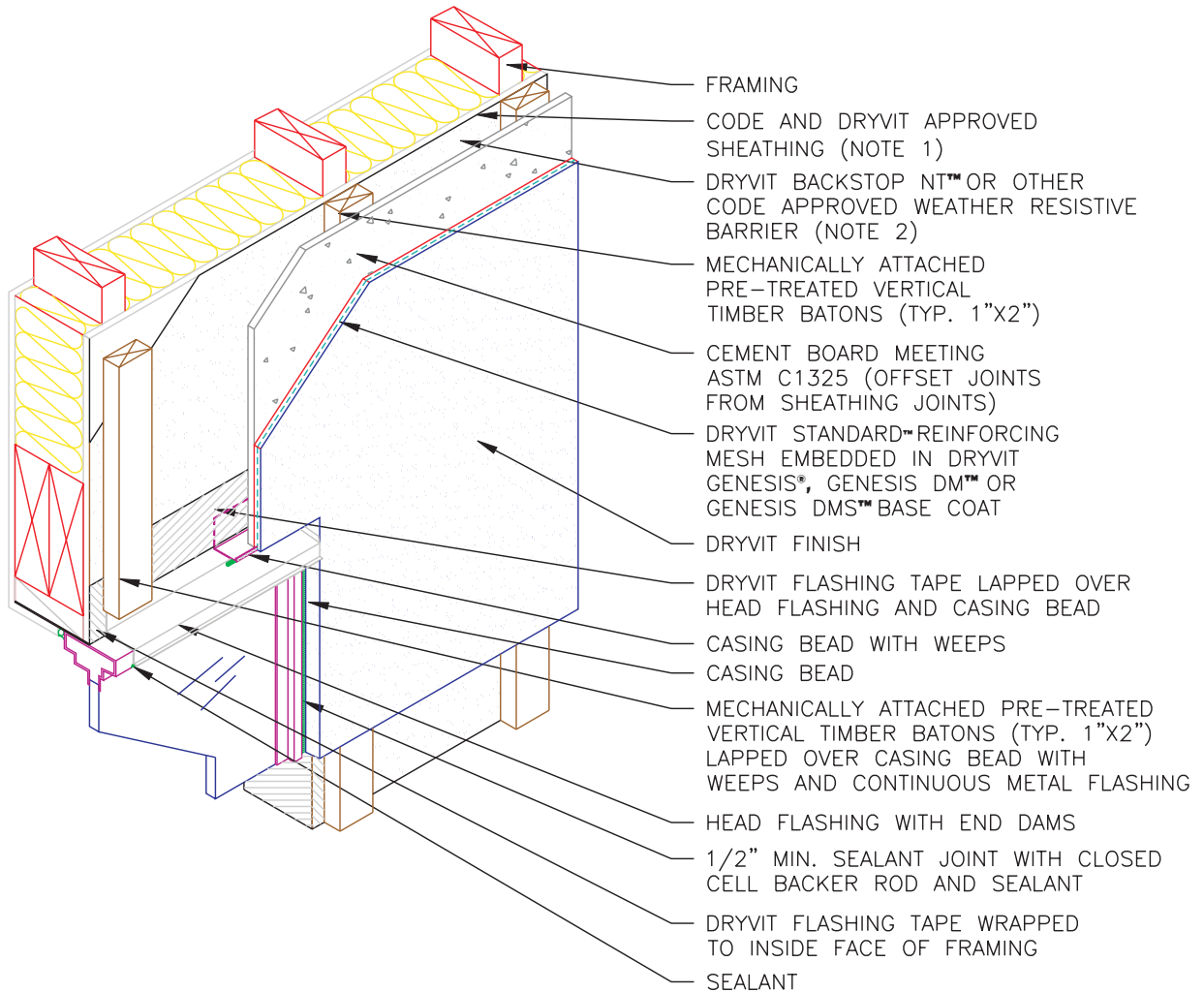
Cement Board MD®

Storefront Window Sill/Jamb

NOTE:

- 1: OSB SHEATHING WILL REQUIRE A SHEET TYPE WEATHER RESISTIVE BARRIER IN LIEU OF BACKSTOP NT
- 2: SHEET TYPE WEATHER RESISTIVE MEMBRANES SHALL BE INSTALLED IN A WEATHER BOARD FASHION

The architecture, engineering and design of the project using the Dryvit products is the responsibility of the project's design professional. All systems must comply with local building codes and standards. This detail is for general information and guidance only and Dryvit specifically disclaims any liability for the use of this detail and for the architecture, design, engineering or workmanship of any project. The project design professional determines, in its sole discretion, whether this detail or a functionally equivalent alternative is best suited for the project. Use of a functionally equivalent detail does not violate Dryvit's warranty. This detail is subject to change without notice. Contact Dryvit to insure you have the most recent version.



Cement Board MD®

Storefront Window Head

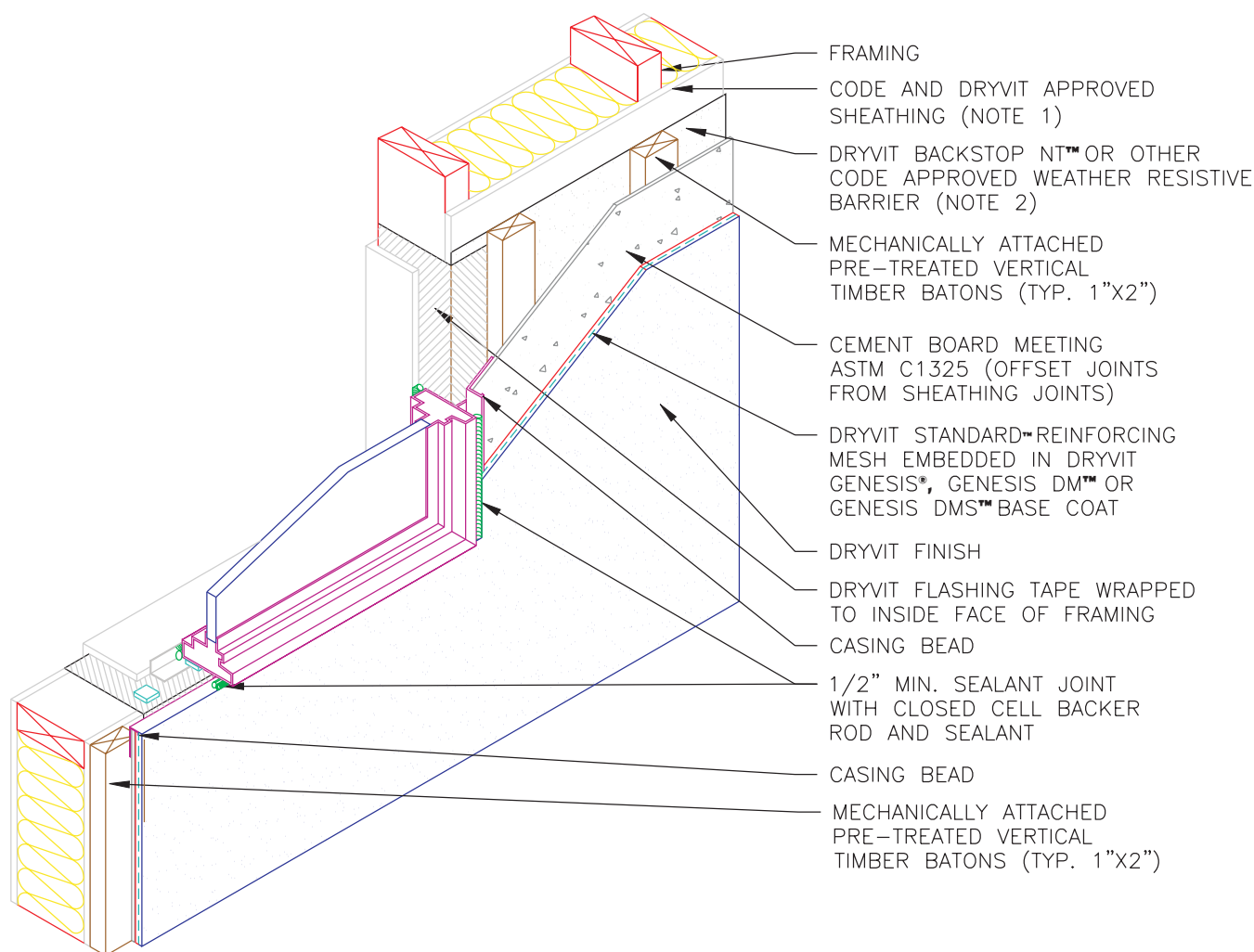
NOTE:

- 1: OSB SHEATHING WILL REQUIRE A SHEET TYPE WEATHER RESISTIVE BARRIER IN LIEU OF BACKSTOP NT
- 2: SHEET TYPE WEATHER RESISTIVE MEMBRANES SHALL BE INSTALLED IN A WEATHER BOARD FASHION

The architecture, engineering and design of the project using the Dryvit products is the responsibility of the project's design professional. All systems must comply with local building codes and standards. This detail is for general information and guidance only and Dryvit specifically disclaims any liability for the use of this detail and for the architecture, design, engineering or workmanship of any project. The project design professional determines, in its sole discretion, whether this detail or a functionally equivalent alternative is best suited for the project. Use of a functionally equivalent detail does not violate Dryvit's warranty. This detail is subject to change without notice. Contact Dryvit to insure you have the most recent version.



APPROVED BY:	REV:	DATE:
RS	0	02/05



Cement Board MD®

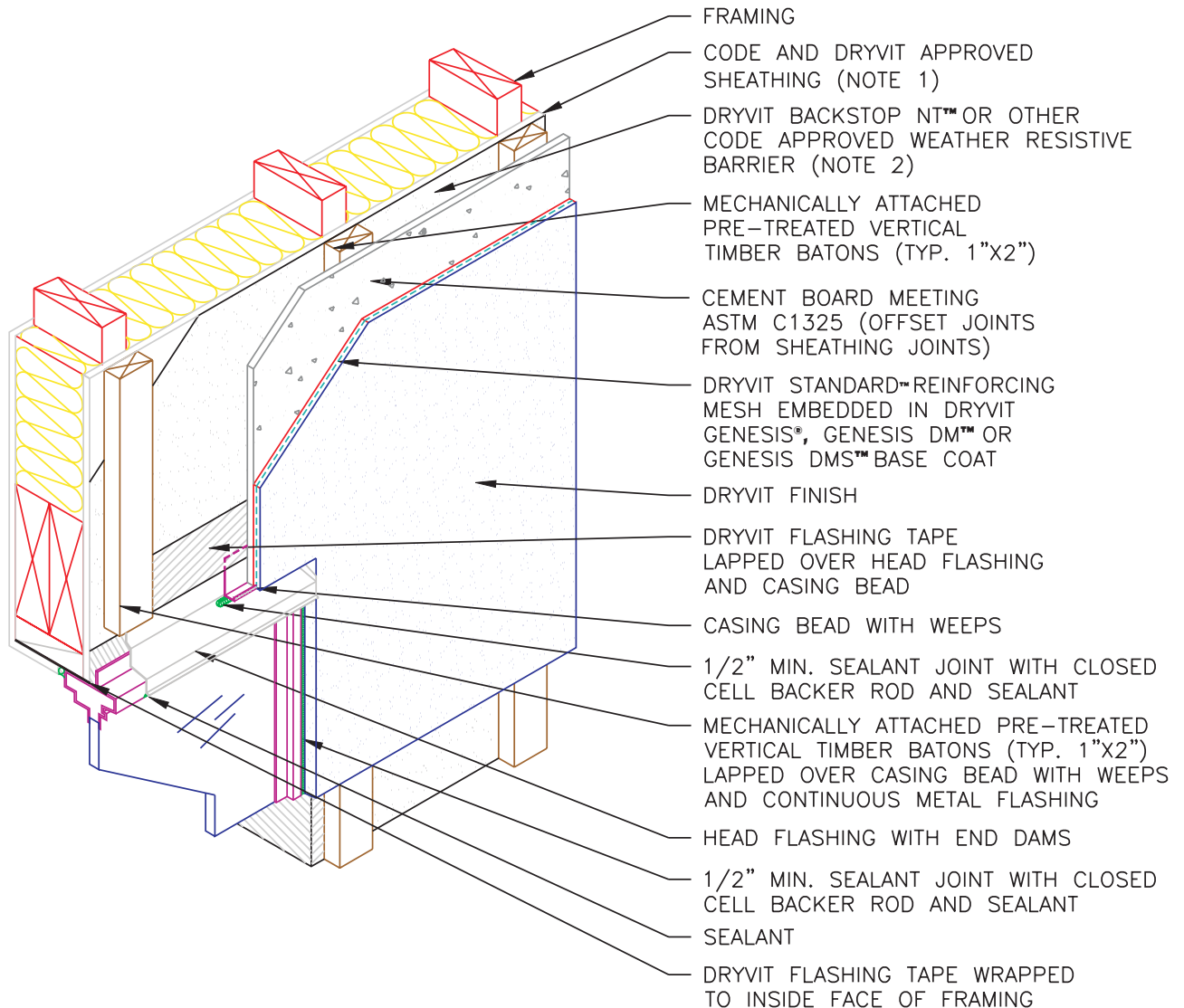
Flanged Window Sill/Jamb

NOTE:

- 1: OSB SHEATHING WILL REQUIRE A SHEET TYPE WEATHER RESISTIVE BARRIER IN LIEU OF BACKSTOP NT
- 2: SHEET TYPE WEATHER RESISTIVE MEMBRANES SHALL BE INSTALLED IN A WEATHER BOARD FASHION

The architecture, engineering and design of the project using the Dryvit products is the responsibility of the project's design professional. All systems must comply with local building codes and standards. This detail is for general information and guidance only and Dryvit specifically disclaims any liability for the use of this detail and for the architecture, design, engineering or workmanship of any project. The project design professional determines, in its sole discretion, whether this detail or a functionally equivalent alternative is best suited for the project. Use of a functionally equivalent detail does not violate Dryvit's warranty. This detail is subject to change without notice. Contact Dryvit to insure you have the most recent version.

APPROVED BY:	REV:	DATE:
RS	0	02/05



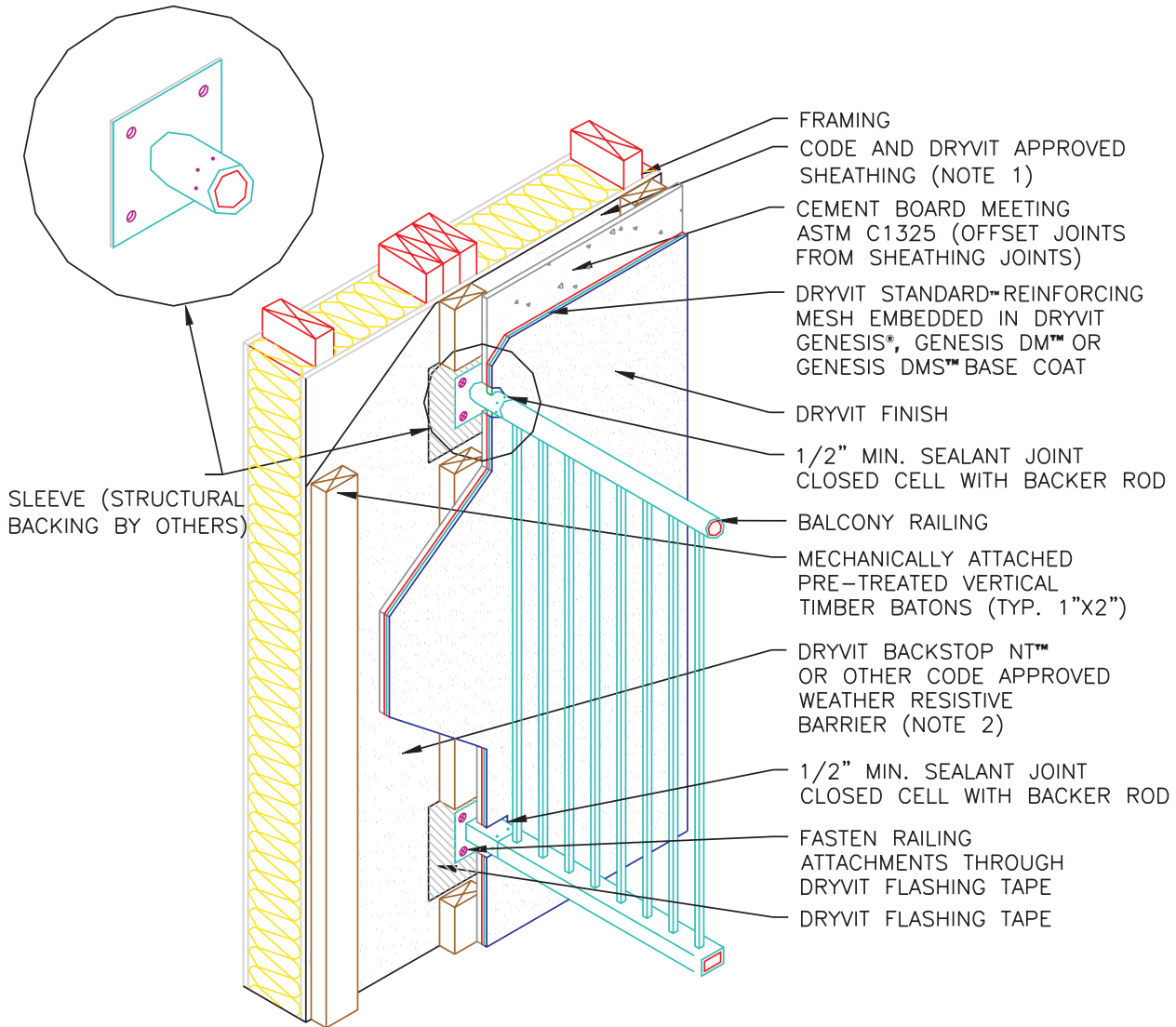
Cement Board MD®

Flanged Window Head

NOTE:

- 1: OSB SHEATHING WILL REQUIRE A SHEET TYPE WEATHER RESISTIVE BARRIER IN LIEU OF BACKSTOP NT
- 2: SHEET TYPE WEATHER RESISTIVE MEMBRANES SHALL BE INSTALLED IN A WEATHER BOARD FASHION

The architecture, engineering and design of the project using the Dryvit products is the responsibility of the project's design professional. All systems must comply with local building codes and standards. This detail is for general information and guidance only and Dryvit specifically disclaims any liability for the use of this detail and for the architecture, design, engineering or workmanship of any project. The project design professional determines, in its sole discretion, whether this detail or a functionally equivalent alternative is best suited for the project. Use of a functionally equivalent detail does not violate Dryvit's warranty. This detail is subject to change without notice. Contact Dryvit to insure you have the most recent version.



Cement Board MD®

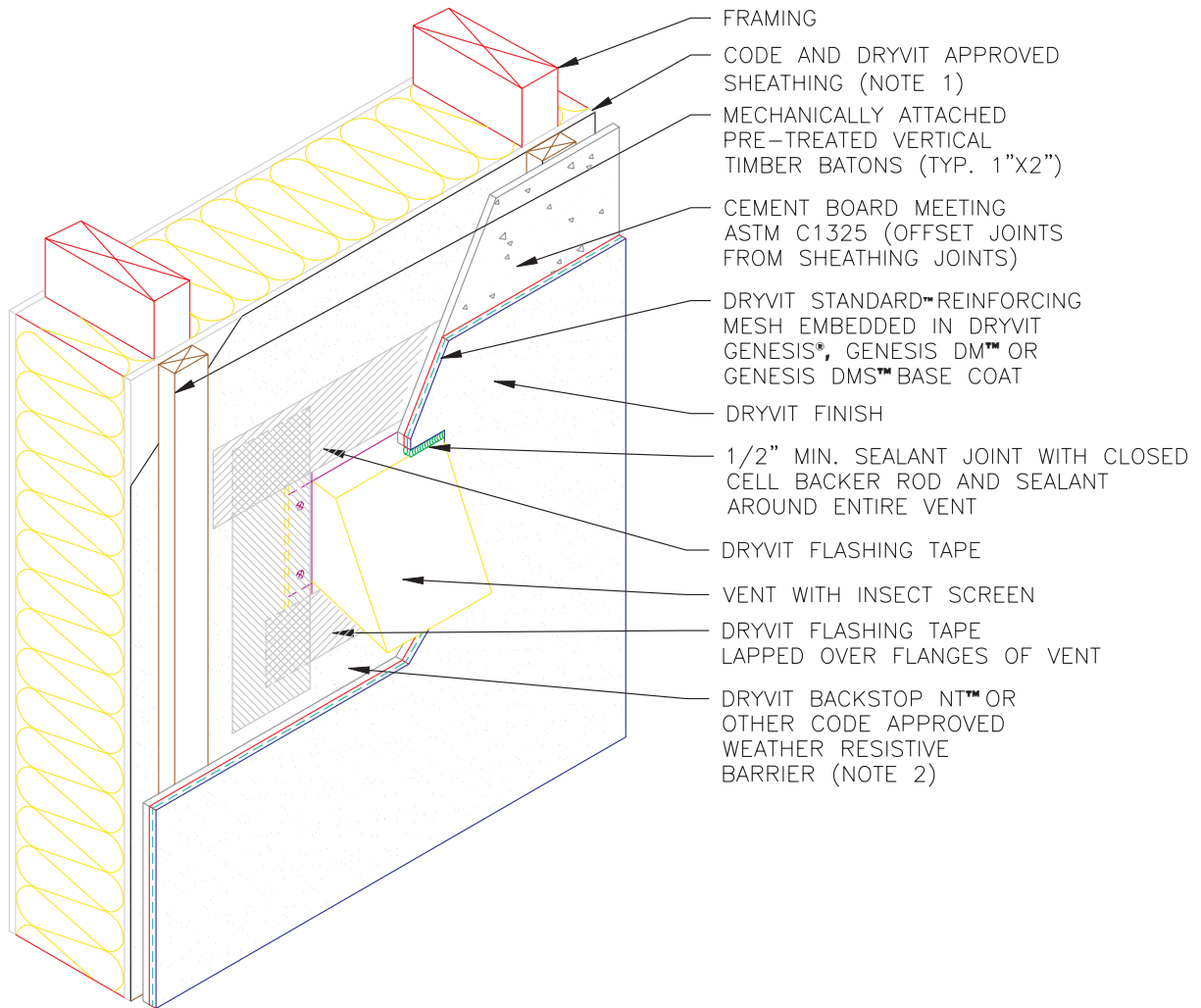
Railing Attachment

NOTE:

- 1: OSB SHEATHING WILL REQUIRE A SHEET TYPE WEATHER RESISTIVE BARRIER IN LIEU OF BACKSTOP NT
- 2: SHEET TYPE WEATHER RESISTIVE MEMBRANES SHALL BE INSTALLED IN A WEATHER BOARD FASHION

The architecture, engineering and design of the project using the Dryvit products is the responsibility of the project's design professional. All systems must comply with local building codes and standards. This detail is for general information and guidance only and Dryvit specifically disclaims any liability for the use of this detail and for the architecture, design, engineering or workmanship of any project. The project design professional determines, in its sole discretion, whether this detail or a functionally equivalent alternative is best suited for the project. Use of a functionally equivalent detail does not violate Dryvit's warranty. This detail is subject to change without notice. Contact Dryvit to insure you have the most recent version.





Cement Board MD®

Vent Penetration

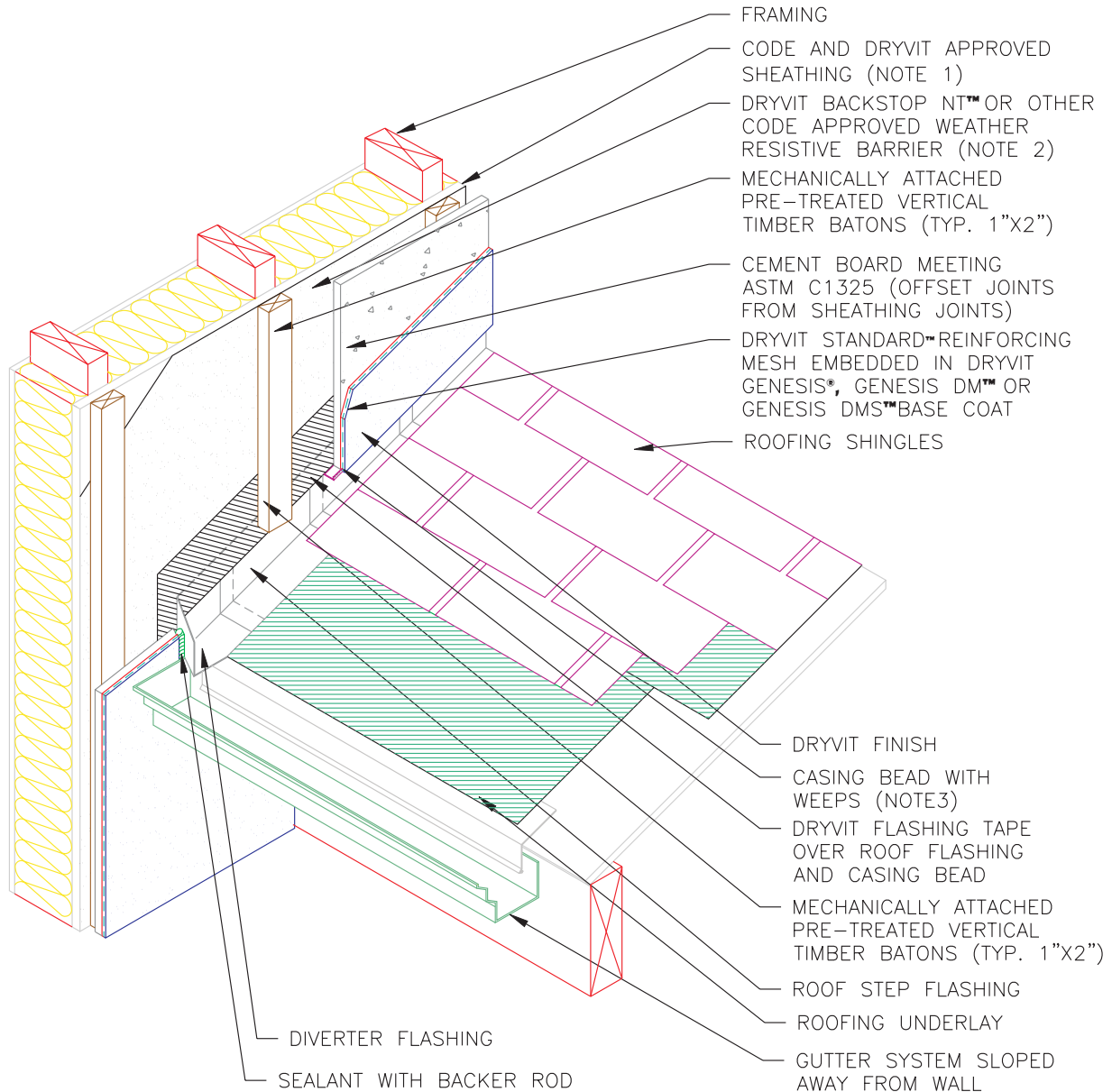
NOTE:

- 1: OSB SHEATHING WILL REQUIRE A SHEET TYPE WEATHER RESISTIVE BARRIER IN LIEU OF BACKSTOP NT
- 2: SHEET TYPE WEATHER RESISTIVE MEMBRANES SHALL BE INSTALLED IN A WEATHER BOARD FASHION

The architecture, engineering and design of the project using the Dryvit products is the responsibility of the project's design professional. All systems must comply with local building codes and standards. This detail is for general information and guidance only and Dryvit specifically disclaims any liability for the use of this detail and for the architecture, design, engineering or workmanship of any project. The project design professional determines, in its sole discretion, whether this detail or a functionally equivalent alternative is best suited for the project. Use of a functionally equivalent detail does not violate Dryvit's warranty. This detail is subject to change without notice. Contact Dryvit to insure you have the most recent version.



APPROVED BY:	REV:	DATE:
RS	0	02/05



Cement Board MD®

Termination at Sloped Roof

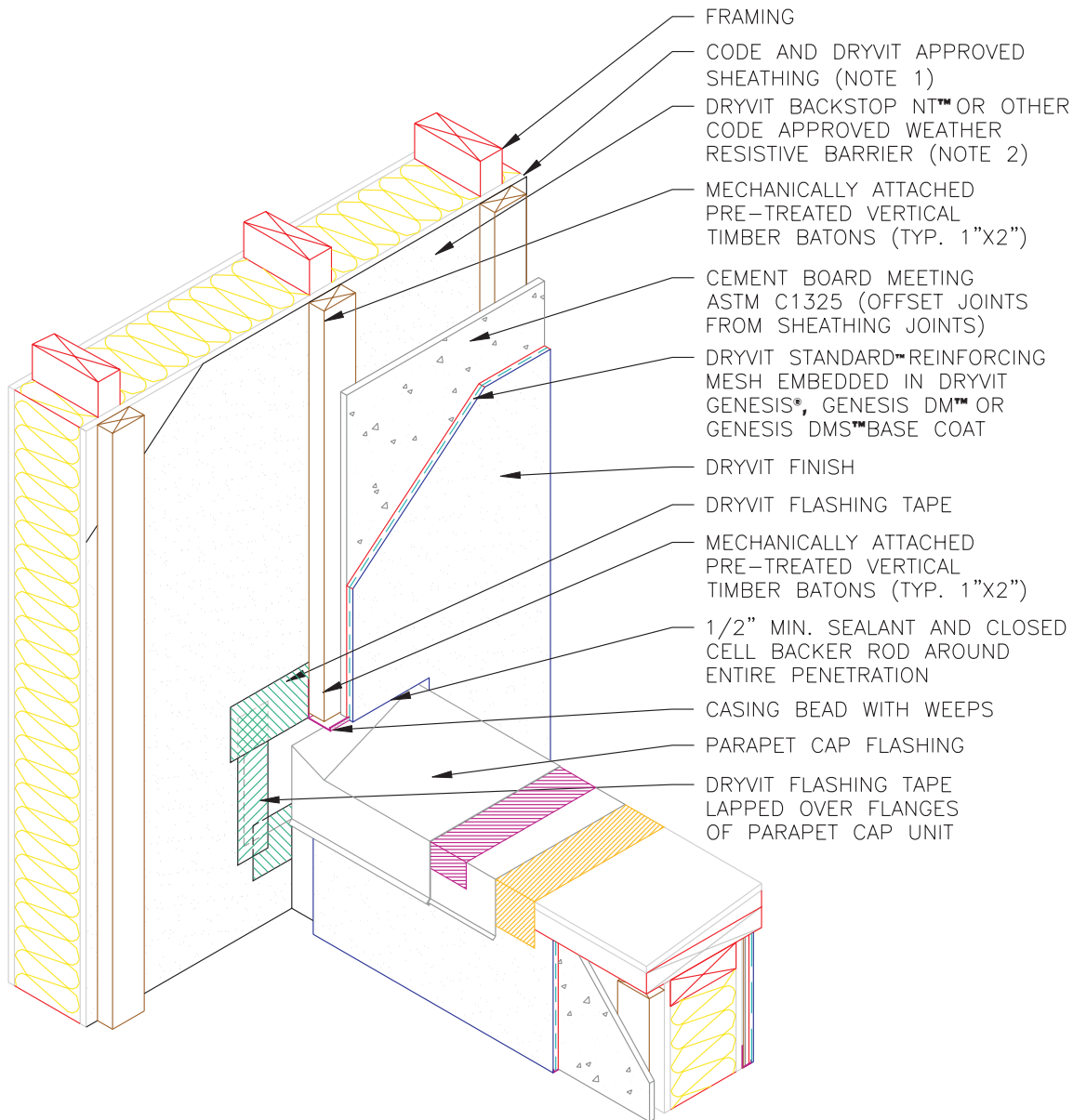
NOTE:

- 1: OSB SHEATHING WILL REQUIRE A SHEET TYPE WEATHER RESISTIVE BARRIER IN LIEU OF BACKSTOP NT
- 2: SHEET TYPE WEATHER RESISTIVE MEMBRANES SHALL BE INSTALLED IN A WEATHER BOARD FASHION
- 3: TERMINATE SYSTEM MIN. 50MM (2") OFF ROOF

The architecture, engineering and design of the project using the Dryvit products is the responsibility of the project's design professional. All systems must comply with local building codes and standards. This detail is for general information and guidance only and Dryvit specifically disclaims any liability for the use of this detail and for the architecture, design, engineering or workmanship of any project. The project design professional determines, in its sole discretion, whether this detail or a functionally equivalent alternative is best suited for the project. Use of a functionally equivalent detail does not violate Dryvit's warranty. This detail is subject to change without notice. Contact Dryvit to insure you have the most recent version.



APPROVED BY:	REV:	DATE:
RS	0	02/05



Cement Board MD®

Parapet Wall Intersection

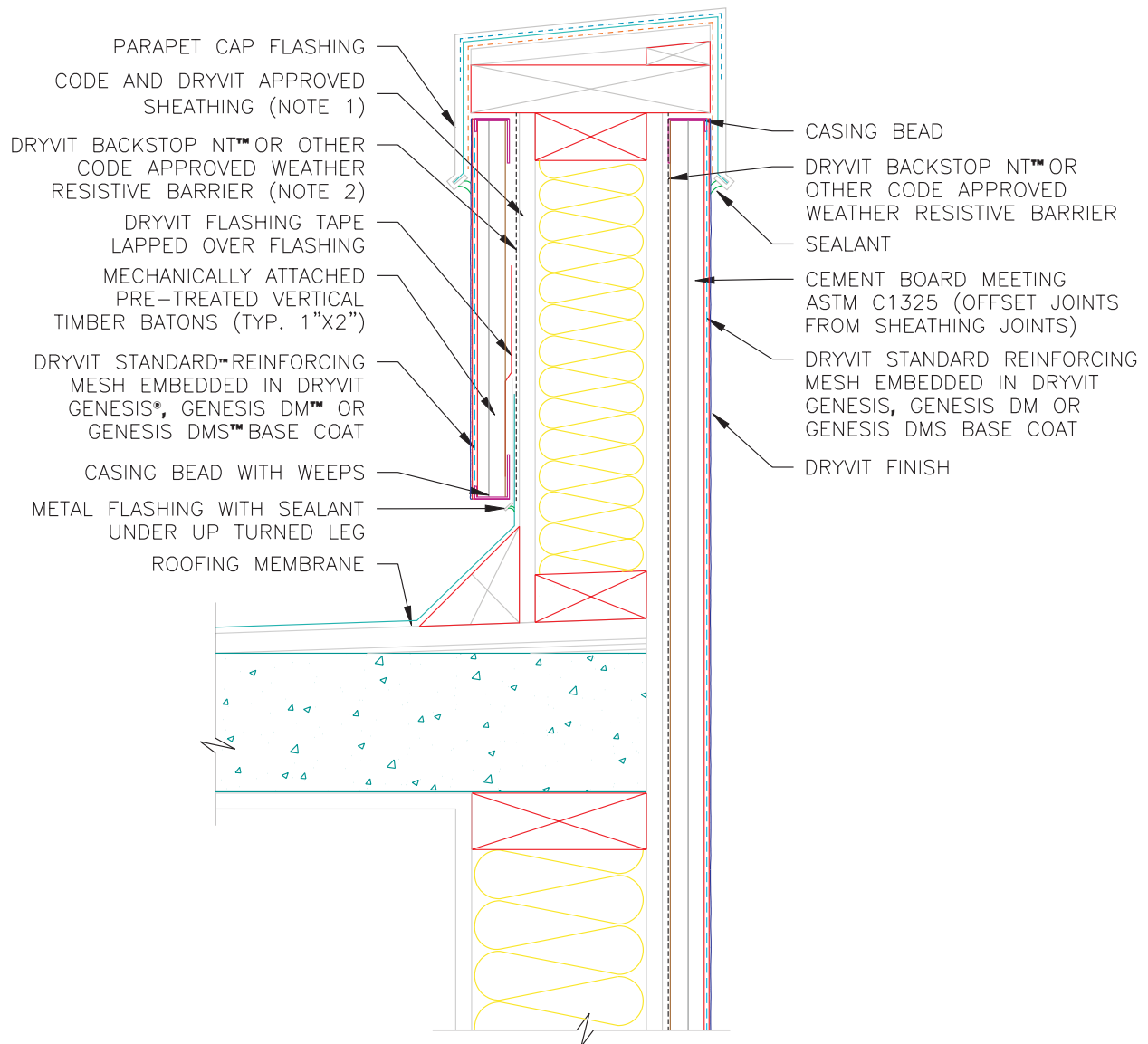
NOTE:

- 1: OSB SHEATHING WILL REQUIRE A SHEET TYPE WEATHER RESISTIVE BARRIER IN LIEU OF BACKSTOP NT
- 2: SHEET TYPE WEATHER RESISTIVE MEMBRANES SHALL BE INSTALLED IN A WEATHER BOARD FASHION

The architecture, engineering and design of the project using the Dryvit products is the responsibility of the project's design professional. All systems must comply with local building codes and standards. This detail is for general information and guidance only and Dryvit specifically disclaims any liability for the use of this detail and for the architecture, design, engineering or workmanship of any project. The project design professional determines, in its sole discretion, whether this detail or a functionally equivalent alternative is best suited for the project. Use of a functionally equivalent detail does not violate Dryvit's warranty. This detail is subject to change without notice. Contact Dryvit to insure you have the most recent version.



APPROVED BY:	REV:	DATE:
RS	0	02/05



Cement Board MD®

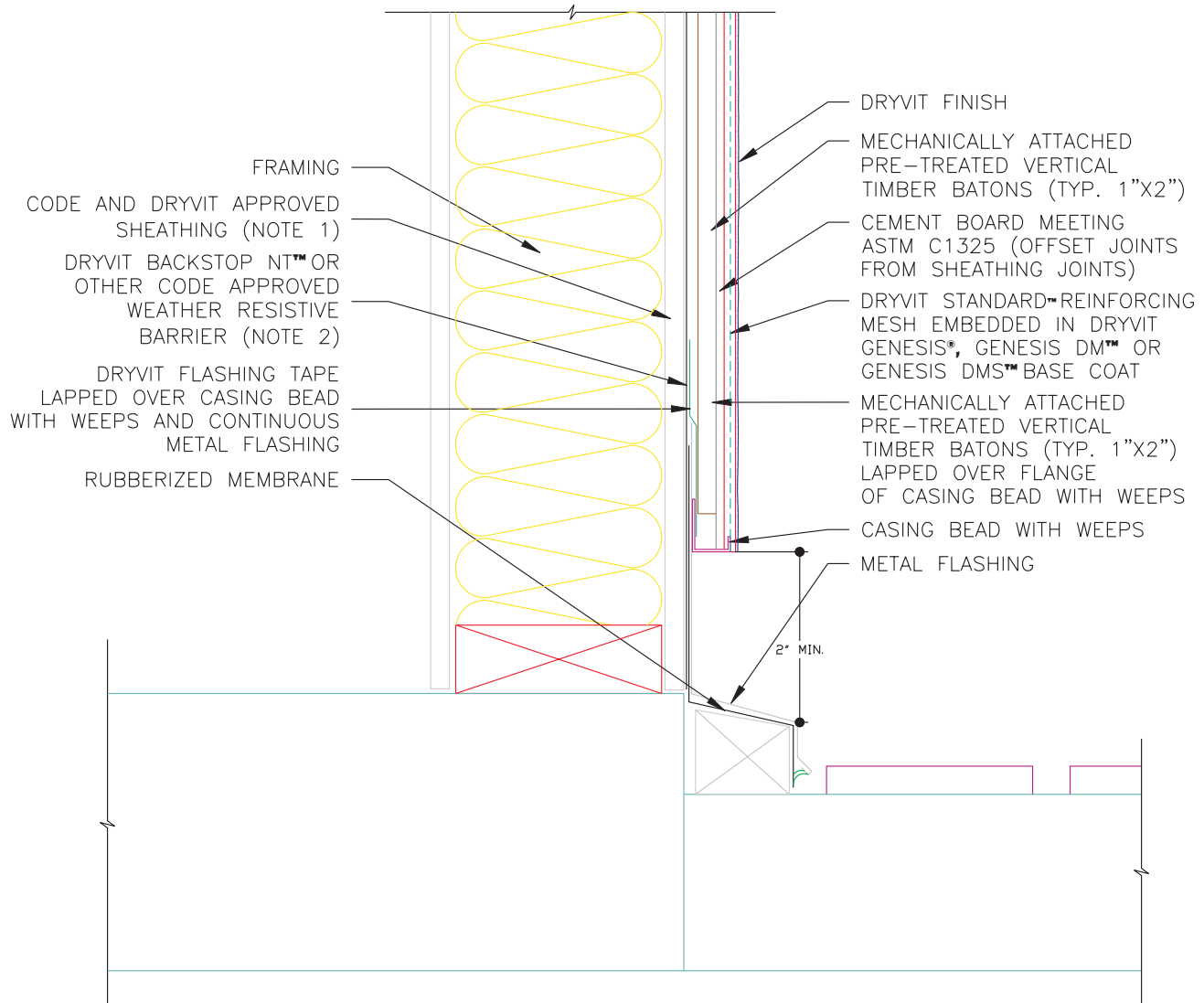
Parapet Termination

NOTE:

- 1: OSB SHEATHING WILL REQUIRE A SHEET TYPE WEATHER RESISTIVE BARRIER IN LIEU OF BACKSTOP NT
- 2: SHEET TYPE WEATHER RESISTIVE MEMBRANES SHALL BE INSTALLED IN A WEATHER BOARD FASHION

The architecture, engineering and design of the project using the Dryvit products is the responsibility of the project's design professional. All systems must comply with local building codes and standards. This detail is for general information and guidance only and Dryvit specifically disclaims any liability for the use of this detail and for the architecture, design, engineering or workmanship of any project. The project design professional determines, in its sole discretion, whether this detail or a functionally equivalent alternative is best suited for the project. Use of a functionally equivalent detail does not violate Dryvit's warranty. This detail is subject to change without notice. Contact Dryvit to insure you have the most recent version.





Cement Board MD®

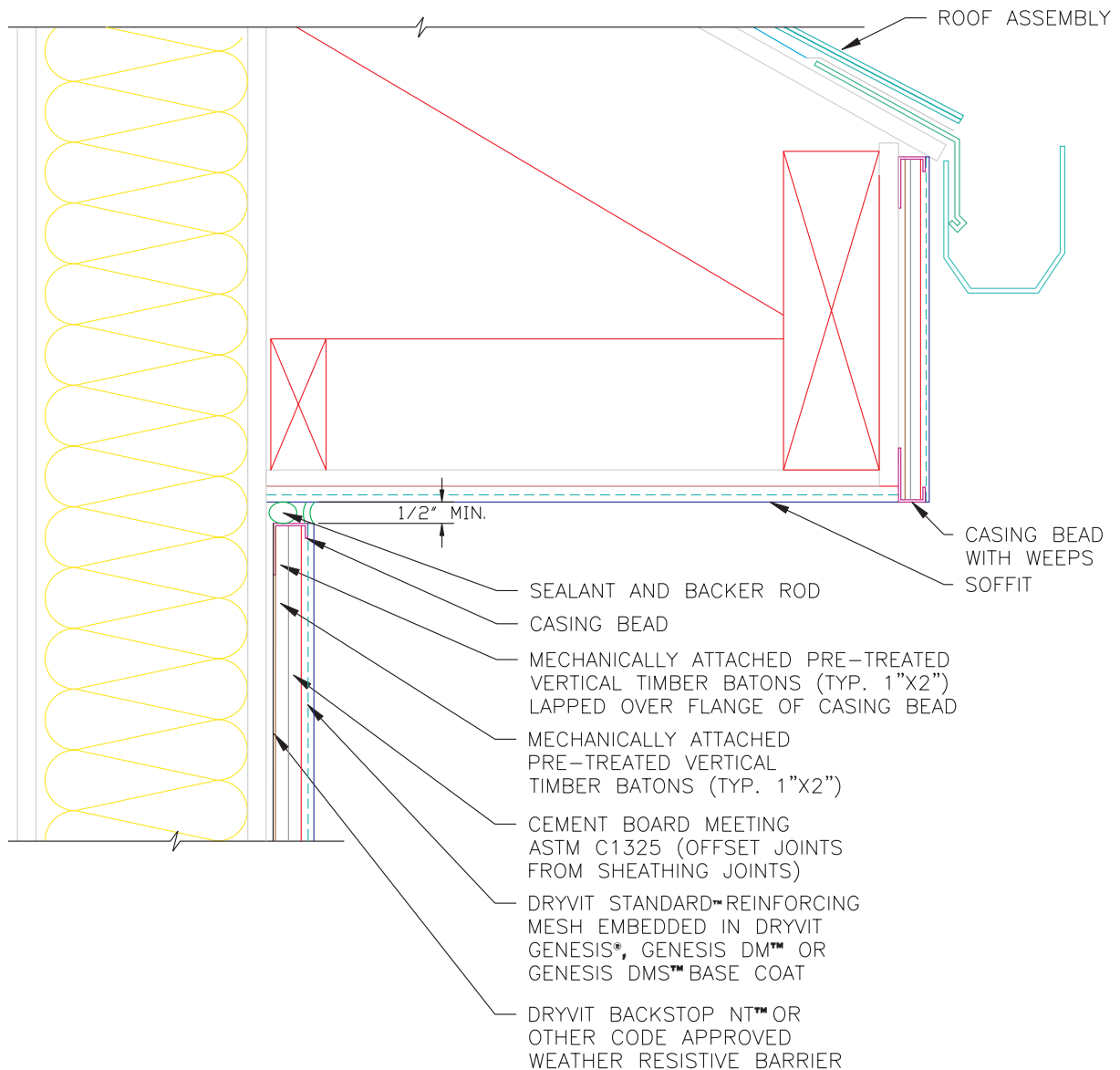
Termination at Deck

NOTE:

- 1: OSB SHEATHING WILL REQUIRE A SHEET TYPE WEATHER RESISTIVE BARRIER IN LIEU OF BACKSTOP NT
- 2: SHEET TYPE WEATHER RESISTIVE MEMBRANES SHALL BE INSTALLED IN A WEATHER BOARD FASHION

The architecture, engineering and design of the project using the Dryvit products is the responsibility of the project's design professional. All systems must comply with local building codes and standards. This detail is for general information and guidance only and Dryvit specifically disclaims any liability for the use of this detail and for the architecture, design, engineering or workmanship of any project. The project design professional determines, in its sole discretion, whether this detail or a functionally equivalent alternative is best suited for the project. Use of a functionally equivalent detail does not violate Dryvit's warranty. This detail is subject to change without notice. Contact Dryvit to insure you have the most recent version.





Cement Board MD®

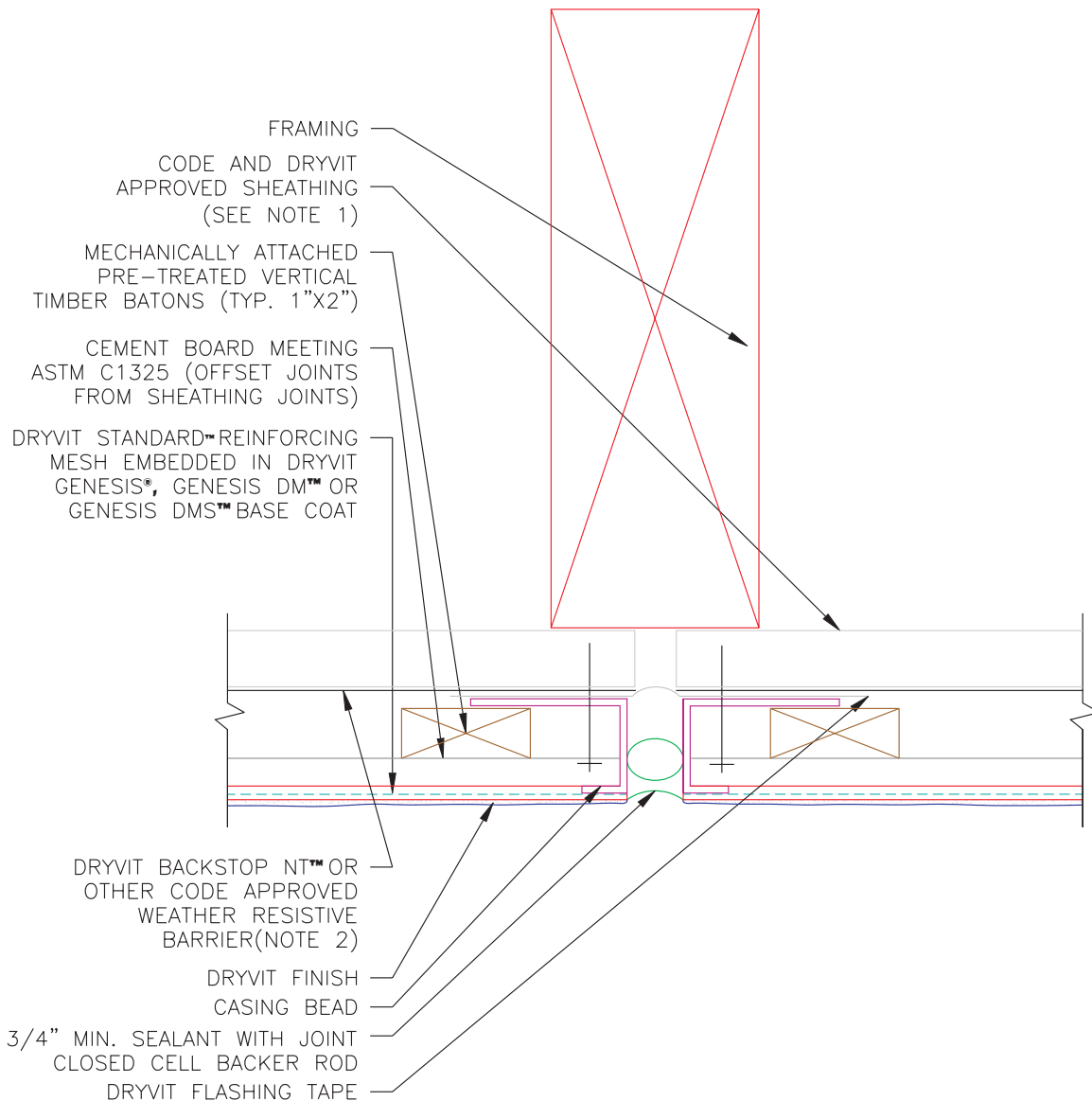
Soffit/Fascia Termination

NOTE:

- 1: OSB SHEATHING WILL REQUIRE A SHEET TYPE WEATHER RESISTIVE BARRIER IN LIEU OF BACKSTOP NT
- 2: SHEET TYPE WEATHER RESISTIVE MEMBRANES SHALL BE INSTALLED IN A WEATHER BOARD FASHION

The architecture, engineering and design of the project using the Dryvit products is the responsibility of the project's design professional. All systems must comply with local building codes and standards. This detail is for general information and guidance only and Dryvit specifically disclaims any liability for the use of this detail and for the architecture, design, engineering or workmanship of any project. The project design professional determines, in its sole discretion, whether this detail or a functionally equivalent alternative is best suited for the project. Use of a functionally equivalent detail does not violate Dryvit's warranty. This detail is subject to change without notice. Contact Dryvit to insure you have the most recent version.





Cement Board MD®

Vertical Control/Expansion Joint

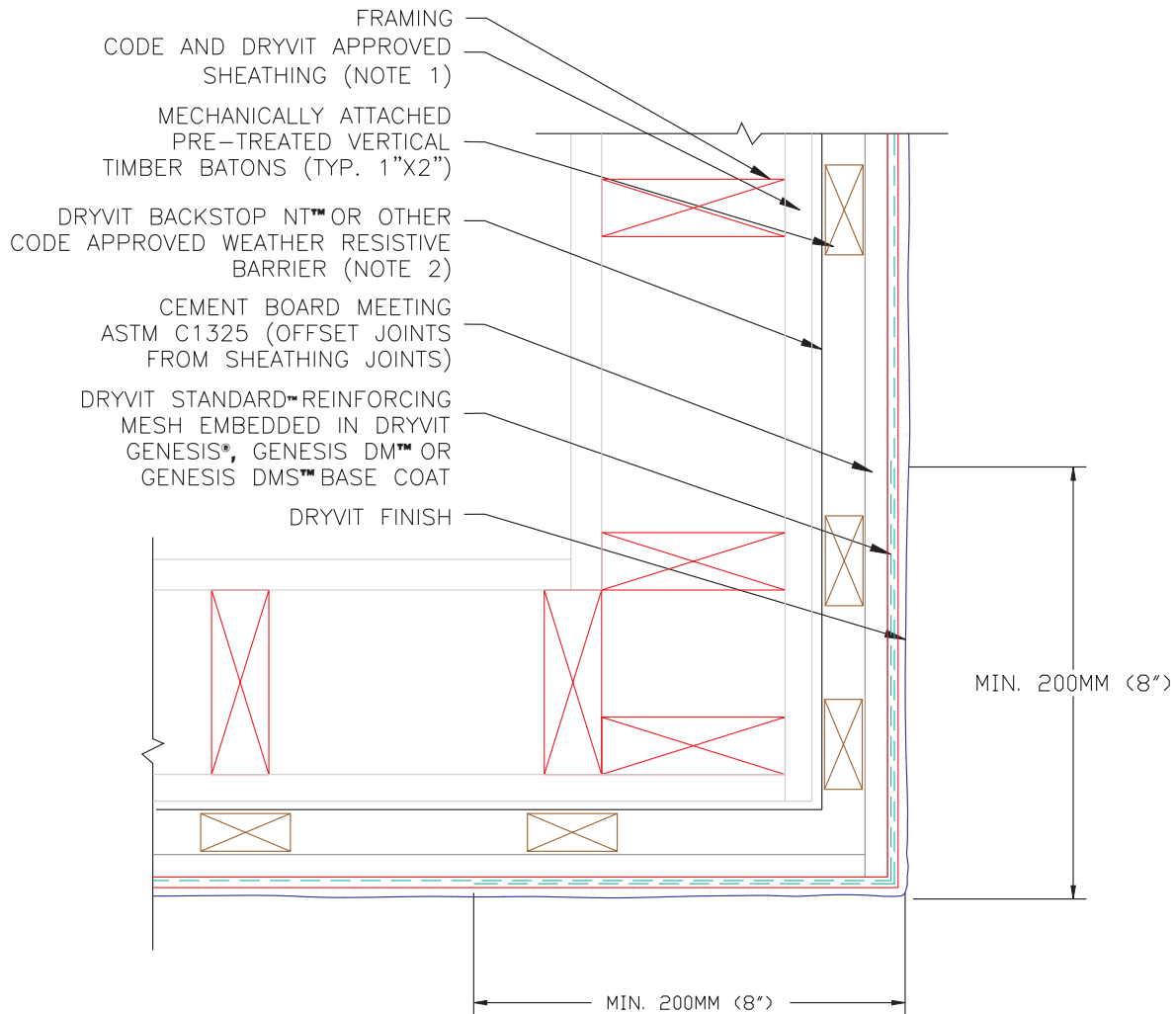
NOTE:

- 1: OSB SHEATHING WILL REQUIRE A SHEET TYPE WEATHER RESISTIVE BARRIER IN LIEU OF BACKSTOP NT
- 2: SHEET TYPE WEATHER RESISTIVE MEMBRANES SHALL BE INSTALLED IN A WEATHER BOARD FASHION

The architecture, engineering and design of the project using the Dryvit products is the responsibility of the project's design professional. All systems must comply with local building codes and standards. This detail is for general information and guidance only and Dryvit specifically disclaims any liability for the use of this detail and for the architecture, design, engineering or workmanship of any project. The project design professional determines, in its sole discretion, whether this detail or a functionally equivalent alternative is best suited for the project. Use of a functionally equivalent detail does not violate Dryvit's warranty. This detail is subject to change without notice. Contact Dryvit to insure you have the most recent version.



APPROVED BY:	REV:	DATE:
RS	0	02/05



Cement Board MD®

Outside Corner

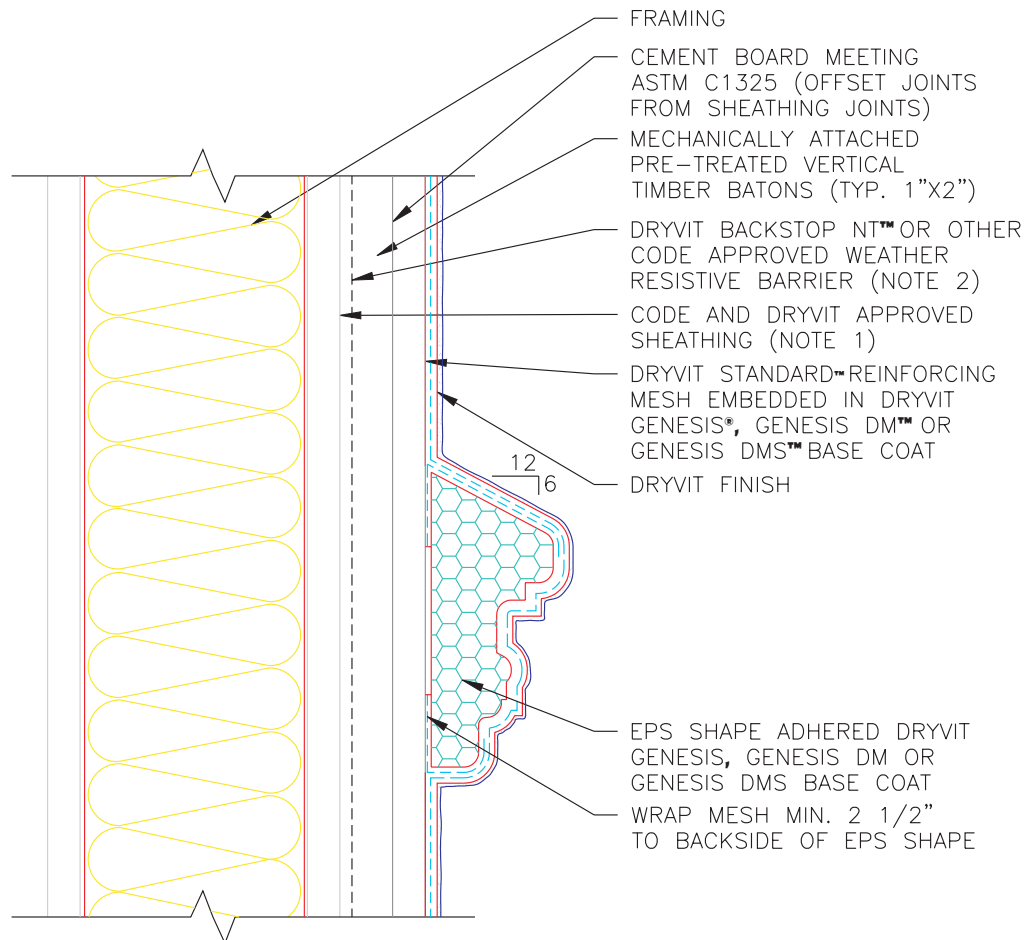
NOTE:

- 1: OSB SHEATHING WILL REQUIRE A SHEET TYPE WEATHER RESISTIVE BARRIER IN LIEU OF BACKSTOP NT
- 2: SHEET TYPE WEATHER RESISTIVE MEMBRANES SHALL BE INSTALLED IN A WEATHER BOARD FASHION
- 3: DO NOT LAP REINFORCING MESH WITHIN 8" OF OUT SIDE CORNERS

The architecture, engineering and design of the project using the Dryvit products is the responsibility of the project's design professional. All systems must comply with local building codes and standards. This detail is for general information and guidance only and Dryvit specifically disclaims any liability for the use of this detail and for the architecture, design, engineering or workmanship of any project. The project design professional determines, in its sole discretion, whether this detail or a functionally equivalent alternative is best suited for the project. Use of a functionally equivalent detail does not violate Dryvit's warranty. This detail is subject to change without notice. Contact Dryvit to insure you have the most recent version.



APPROVED BY:	REV:	DATE:
RS	0	02/05



Cement Board MD®

NOTE:

- 1: OSB SHEATHING WILL REQUIRE A SHEET TYPE WEATHER RESISTIVE BARRIER IN LIEU OF BACKSTOP NT
- 2: SHEET TYPE WEATHER RESISTIVE MEMBRANES SHALL BE INSTALLED IN A WEATHER BOARD FASHION

EPS Shape Attachment

The architecture, engineering and design of the project using the Dryvit products is the responsibility of the project's design professional. All systems must comply with local building codes and standards. This detail is for general information and guidance only and Dryvit specifically disclaims any liability for the use of this detail and for the architecture, design, engineering or workmanship of any project. The project design professional determines, in its sole discretion, whether this detail or a functionally equivalent alternative is best suited for the project. Use of a functionally equivalent detail does not violate Dryvit's warranty. This detail is subject to change without notice. Contact Dryvit to insure you have the most recent version.



APPROVED BY:	REV:	DATE:
RS	0	02/05