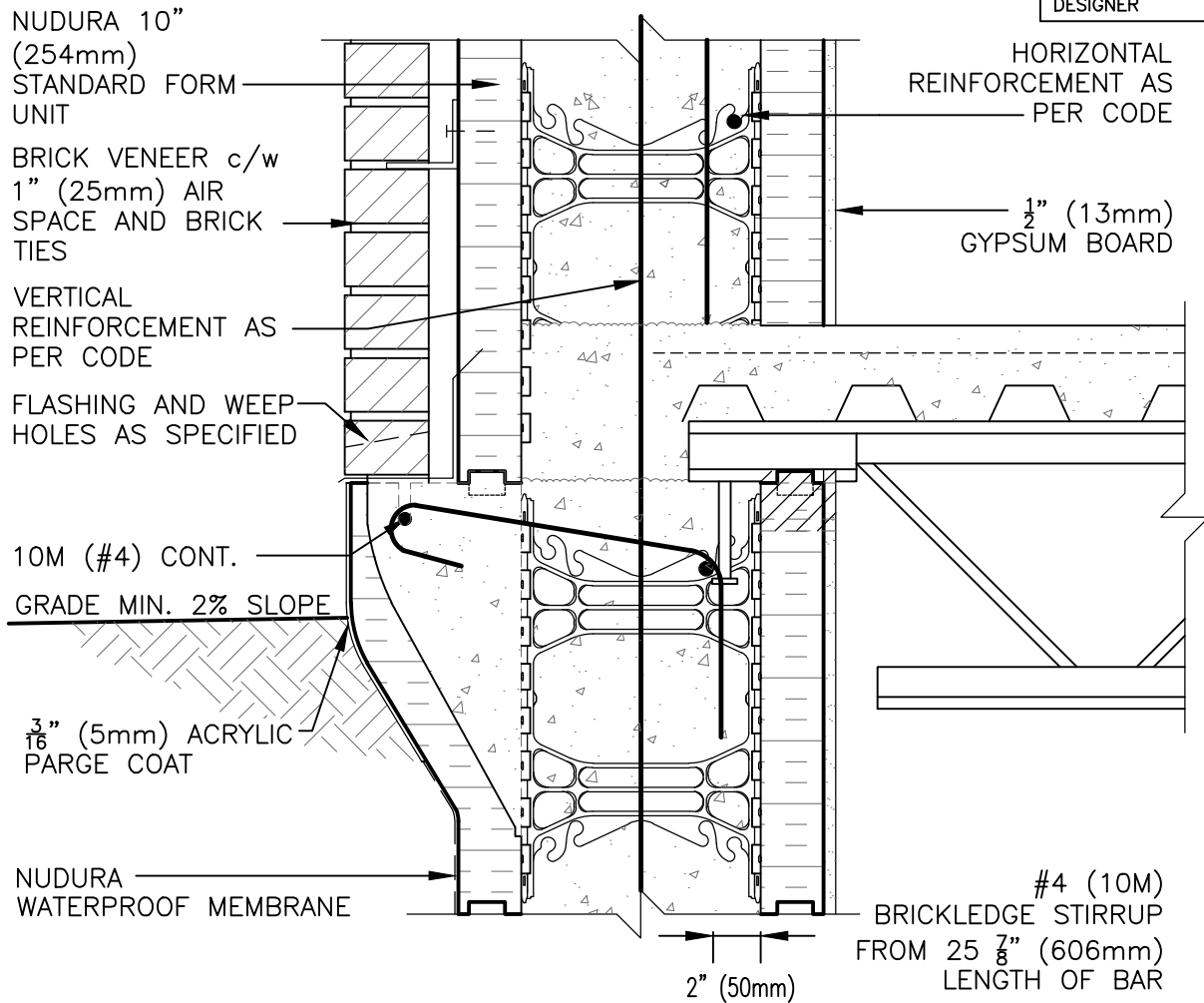


DISCLAIMER NOTICE:
SPECIFIC INFORMATION
REQUIRED FOR COMPLIANCE
WITH LOCAL CODES IS THE
RESPONSIBILITY OF THE
DESIGNER



NOTES:

1. MINIMUM CONCRETE COMPRESSIVE STRENGTH AT 28 DAYS 3000 PSI (20 MPa).
2. REINFORCING STEEL SHALL BE HARD GRADE DEFORMED BARS CONFORMING TO CSA G30.12 GRADE 400.
3. WALL REINFORCING SHALL BE IN ACCORDANCE WITH NUDURA INTEGRATED BUILDING SYSTEM, LOCAL CODE OR ENGINEERING DRAWINGS.
4. BRICK UNIT WEIGHT: 40LBS/FT (1.9 KPa) IN VERTICAL PLANE.
5. MAXIMUM WALL HEIGHT: 27' (8.23m) UNLESS ENGINEERED OTHERWISE
6. ASSUME BRICK LAYING IN ACCORDANCE WITH APPLICABLE CODES.



NUDURA 10" (254mm)
BRICK LEDGE REINFORCEMENT DETAIL
OWSJ FLOOR CONNECTION AT GRADE
BRICK VENEER FINISH
VERTICAL SECTION VIEW

REV. NO.
002 TV

DATE:
APR 2007

DRAWN BY:
J. NEILON

DWG NO.

A10B02

SCALE:
1 : 8