

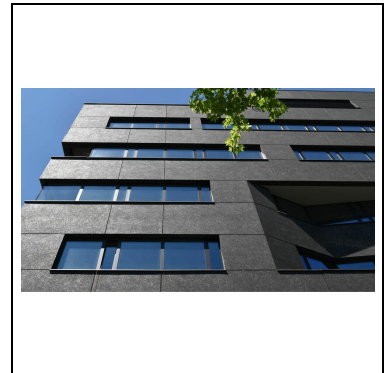
Ameristone

Decorative finish

20-05-2026 / V 2

Description

Ameristone... rock solid and beautiful, provides the architect and designer with a new level of durability and performance in an elegant architectural stone finish. Ameristone is a dramatic blend of natural aggregates varying in size and colour, encased in a clear, 100% acrylic binder.



Features and Benefits

- 100% acrylic based finish
- Wide colour range of natural aggregates decorative and visually pleasing
- Vapour permeable allows vapour transmission
- Lightweight compared to traditional stone products
- Resistant to colour fade from UV light long lasting effect
- Good dirt repellence and reduced mould growth

Usage Purpose

Ameristone is recommended for use with any of Dryvit's External Wall Insulation System (EWIS) and Anti Crack Render (ACR) Systems over Nudura. For alternative substrates please contact Tremco CPG UK Ltd.

Packaging

Ameristone is shipped in 24 kg pails.

Available Colour

Available in 10 standard colours

Storage

Store in sealed original packaging, in dry conditions at temperatures between 4°C and 38°C, for a maximum of 24 months from the production date indicated on the packaging. Protect the packaging against damages. direct sunlight and impact of atmospheric conditions and moisture.

Ameristone

Technical Characteristics

Application Conditions

Air and surface temperature for application of finish must be from 10°C to 25°C and must remain so for a minimum of 48 hours. The material temperature must be lower than 38°C.

Substrate Preparation

Surfaces must be smooth, clean, dry and structurally sound. If efflorescence, grease, loose paint, oil, form release agents and curing compounds are present, the surface shall be thoroughly washed with Dryvit Efflorescence Remover or equivalent product and flushed to remove residual acid. The surface shall be painted with Color Prime or Color Prime Plus in a co-ordinating colour before applying the finish. The base coat must be dry and cured for a minimum of 24 hours before application of primer and finish. All projections shall be removed and small voids filled with Genesis, Genesis DM Plus or Fibercoat (see product data sheets for mixing and application) prior to the application of the finish.

Mixing

Some settling of the finish may occur during shipping. Thoroughly mix the finish with a slow speed drill (450-500 rpm) and paddle until a uniform workable consistency is attained (approximately 1 min). Care should be taken not to over mix the finish. Ameristone can normally be applied without the addition of water however if necessary additional water can be added in small increments. The same amount of water must be added to all pails of a given batch. Do not add more than 0.2 litres of water per pail.

Application

Colour-coordinated Color Prime or Color Prime Plus (*see chart) shall be applied to all substrates a minimum of four hours prior to application of Ameristone. The primer must be fully dry before Ameristone is applied. Ameristone should be applied by a skilled applicator experienced in the spraying of aggregate finishes. Apply in two passes (one horizontally, one vertically) to achieve uniformity. Apply the second pass whilst the first pass is still wet. Ameristone shall be applied at a total minimum thickness of 1.6 mm, but not greater than 3.0 mm.

Coverage

Ameristone coverage is approximately 5.3 - 6.1 m² per pail. All coverages are approximate and depend upon substrate profile, details and individual application technique. Estimates take no account of wastage.

Tool Cleaning

All equipment must be washed with clean water immediately after use and while the finishes are still wet. Disposal must be in accordance with local and national legislation and must not be emptied into drainage systems.

Please Note

Ameristone must not be used on exposed exterior horizontal surfaces. Minimum slope is 6 in 12, which is 27°. Maximum length of slope is 300mm. Ameristone shall not be used below grade. Minor colour deviation will occur due to the natural aggregate and variations in raw materials. It is strongly recommended that when ordering this finish for a particular project, all pails required to complete that project be ordered at the same time. To achieve the best colour results, material from

Ameristone

the same batch number should be applied to a specific wall section. Therefore, check batch numbers before applying materials. Spray technique can also affect final colour. Orifice size, pressure, application thickness and the distance of the spray gun from the substrate should remain constant in order to achieve uniform appearance. A minimum 2.5 m x 2.5 m area of actual project or mock-up wall shall be coated by the applicator/contractor with the Ameristone finish to establish acceptance by the owner, architect or project manager. Ameristone is not intended for direct-applied, vertical applications over exterior gypsum based sheathing, foam plastic insulation or other type insulation board. Do not apply Ameristone on surfaces which will receive sealant. Those surfaces shall be coated with colour-coordinated Colour Prime or Colour Prime Plus.

Maintenance

Ameristone can be washed using WallCare to remove any algal growth. After application the washed surface should be rinsed with water. Maximum cleaning pressure - 120 atmospheres. The distance of the washing nozzle from the wall should be 0.4 - 0.5 m.

Guarantee / Warranty

Tremco CPG UK Ltd products are manufactured to rigid standards of quality. Any product which has been applied (a) in accordance with Tremco CPG UK Ltd written instructions and (b) in any application recommended by Tremco CPG UK Ltd, but which is proved to be defective, will be replaced free of charge. No liability can be accepted for the information provided in this leaflet although it is published in good faith and believed to be correct.

Tremco CPG UK Limited reserves the right to alter product specifications without prior notice, in line with Company policy of continuous development and improvement.

Health And Safety Precautions

For information on handling the product, storage and disposal refer to the current safety data sheet (SDS) available at www.dryvit.co.uk.

Drying Time

The drying of the finish is dependent on the air temperature, relative humidity and coating thickness. Under average drying conditions 20°C, 55% RH, protect work from rain for at least 48 hours. Lower temperatures and higher humidities will require that the finish be protected for longer during the drying period. During application and until the finish is completely dry, it must be protected against adverse weather conditions (strong wind, rain, high temperature, sunshine, fog etc.).

Certification



Construction Products Group